

MAGAIN



25 Wakefield Avenue MORPHETT VALE SA

3  1  1 

Contact Travis Denham or Craig Thomson for viewing times.

This fantastic home is situated on a generous allotment of approx. 750sqm, set on a quiet street close to all the local amenities including shops, quality schools, public transport, access to the southern expressway and more. It is a must see for first home buyers or those seeking a superb investment opportunity.

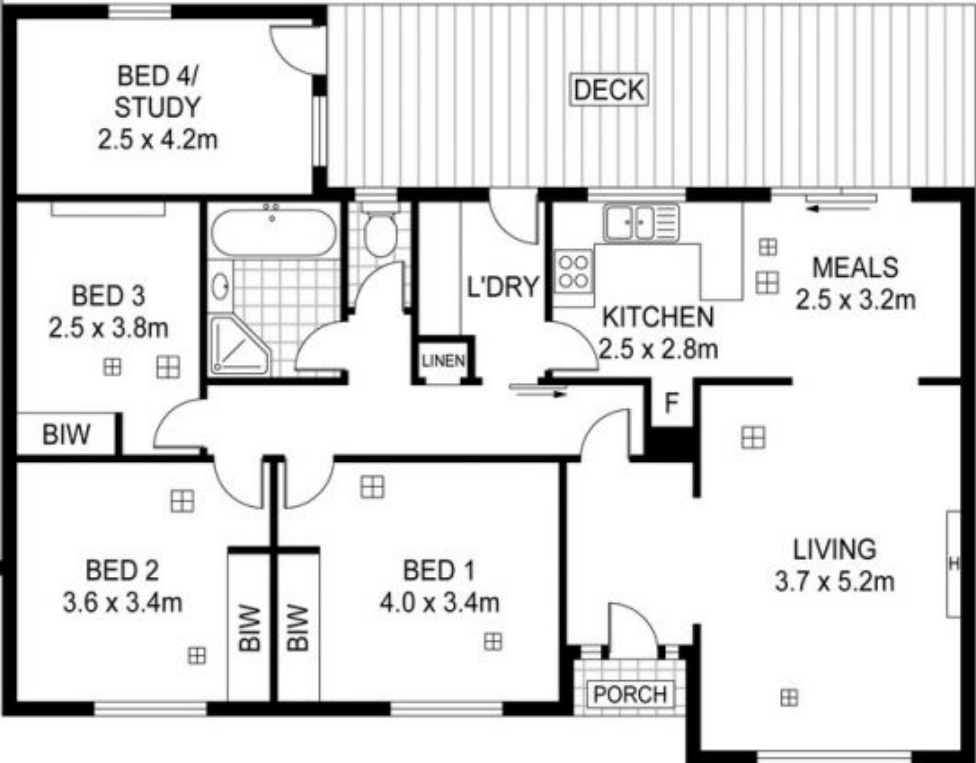
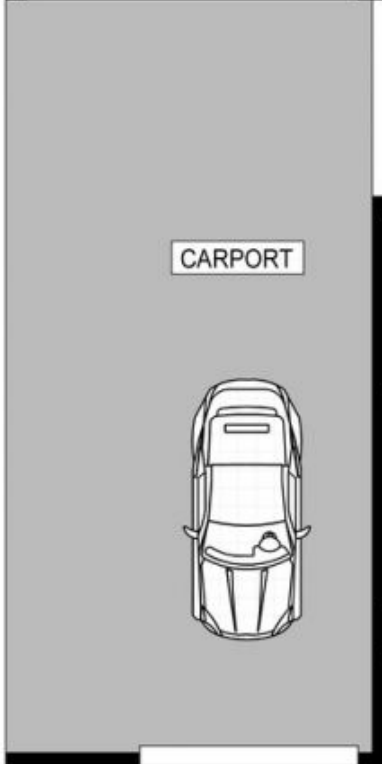
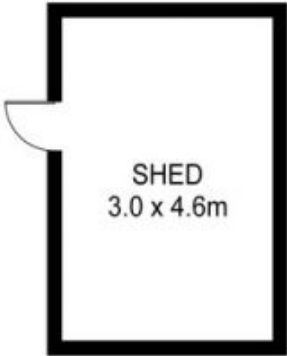
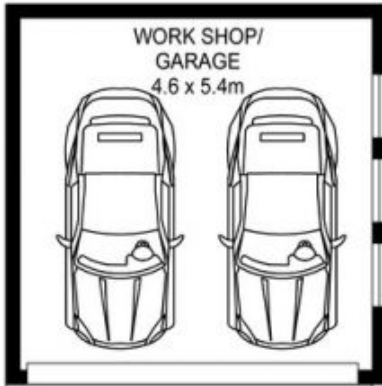
The home offers 3 size-able bedrooms throughout, each featuring built in mirrored robes and carpet flooring. The home also features a spacious room off the outdoor entertaining area, perfect for a home office or rumpus room, the choice is yours! The beautifully updated

[For full version visit the website](https://www.magain.com.au/property/25-wakefield-avenue-morphett-vale-sa/842444)

Type : House
Building Size : 13 sqm
Land Size : 750 sqm
View : <https://www.magain.com.au/property/25-wakefield-avenue-morphett-vale-sa/842444>



Travis Denham
08 8398 1494



Scale in metres. Indicative only. Dimensions are approximate. All information contained herein is gathered from sources we believe to be reliable. However we cannot guarantee its accuracy and interested persons should rely on their own enquiries

INT : 107m²

25 Wakefield Avenue, Morphett Vale