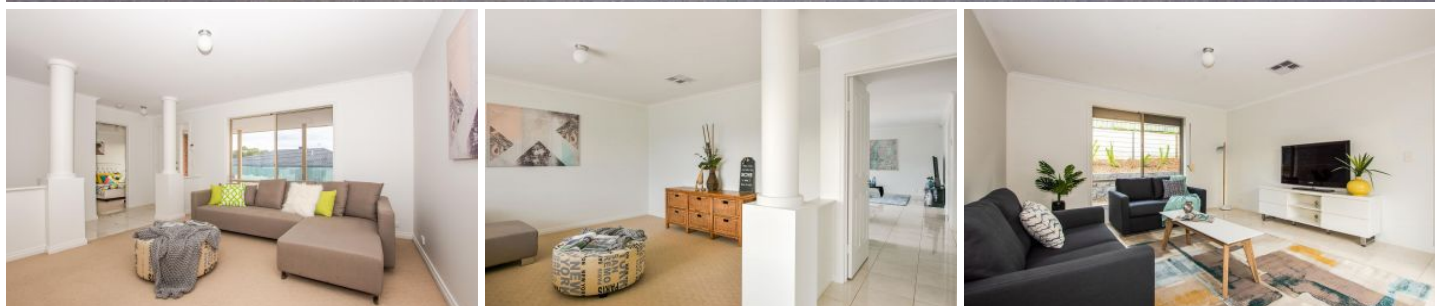


MAGAIN



65 Erebus Circuit MORPHETT VALE SA

4 2 2

Located on a well-established street in the highly sought-after suburb of Morphett Vale, this four bedroom home presents exceptional value for money. With over 200 sqm of living space, a highly versatile floorplan and a double garage, this home is perfect for the growing family and savvy investor alike.

Completed in 2008, this property was purpose built for those who love entertaining and appreciate the luxuries of living in a convenient Southern location. As you enter the home, you are greeted with a charming formal entry. To the left is a formal lounge room which features a large front-facing window, quality carpets and two decorative columns which give the room a luxurious feel. To the right of the entry is the spacious master bedroom with an

[For full version visit the website](https://www.magain.com.au/property/65-erebus-circuit-morphett-vale-sa/8424442)

Type : House
Building Size : 23 sqm
Land Size : 584 sqm
View : <https://www.magain.com.au/property/65-erebus-circuit-morphett-vale-sa/8424442>



Travis Denham
08 8398 1494

65 Erebus Circuit Morphett Vale, South Australia



Picture intended as a reference only. Any specific measurements required should be obtained by an independent surveyor.