

MAGAIN



14 St Andrews Way MORPHETT VALE SA

3 1 1

Positioned in the popular suburb of Morphett Vale and in close proximity to a number of local amenities, sits this beautifully presented three bedroom family home. With genuine street presence, two separate living areas, a spacious and versatile floorplan including a stunning outdoor entertaining area and beautifully manicured gardens, this property will not be on the market for long.

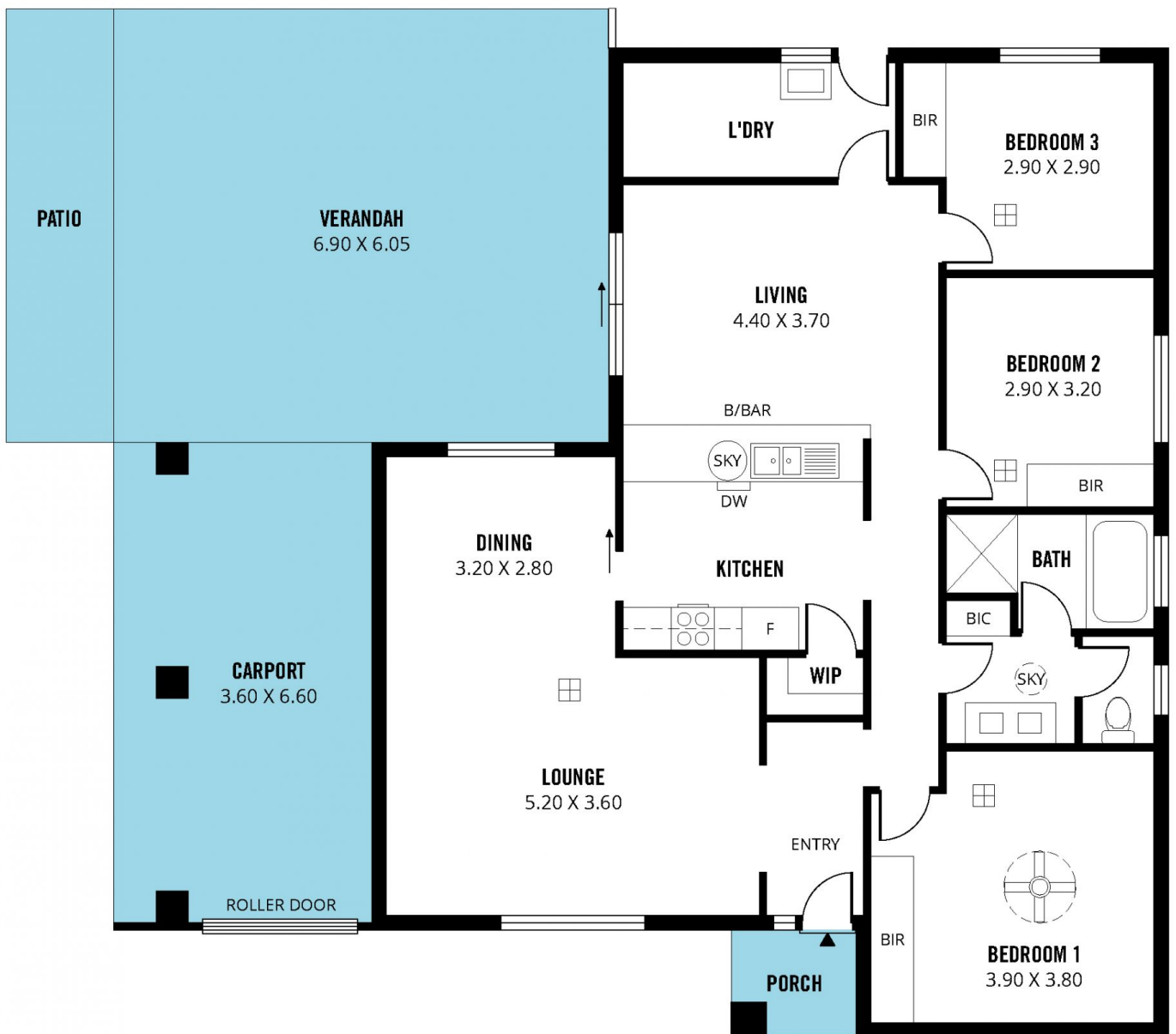
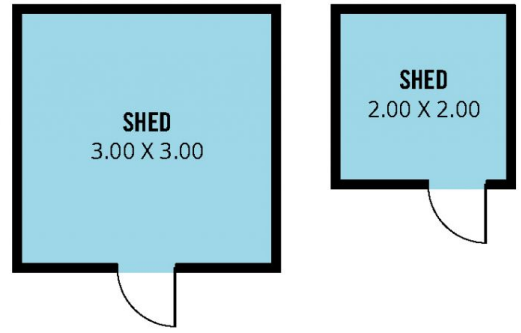
From the moment you step into this home, you will notice the abundance of quality features and fittings throughout, beginning with the flooring. To the left of the charming entry is the front-facing living/dining area which is beautiful and bright, benefiting from a large picture window that spills plenty of natural light into the room. The dining will comfortably seat the entire family for a delicious meal.

[For full version visit the website](https://www.magain.com.au/property/14-st-andrews-way-morphett-vale-sa/8424495)

Type : House
Building Size : 15 sqm
Land Size : 612 sqm
View : <https://www.magain.com.au/property/14-st-andrews-way-morphett-vale-sa/8424495>



Travis Denham
08 8398 1494



Scale in metres. This drawing is for illustration purposes only. All measurements are approximate and details intended to be relied upon should be independently verified.

Produced by **The Fotobase Group**