

MAGAIN



We want to keep our beautiful state,
and our vendors' homes safe.

So please wear a mask at
our open inspections.

magain
REAL ESTATE



28 Carriage Avenue SHEIDOW PARK SA

4 2 2

Have you been looking for a prominent home nestled in the stunning suburb of Sheidow Park - look no further, we have exactly what you need right here! Situated amongst other quality home's and offering four bedrooms, two bathrooms and three spacious living areas - this Hickinbotham designed home is sure to impress. With striking street presence, 257sqm of internal living space, charming designs and elements throughout including 24 solar panels for energy efficiency; this property will not be on the market for long.

Completed in 2003, this property was purpose built for those who love entertaining and appreciate the luxuries of living in a scenic, yet private location. As you step through the front doors, you will instantly feel the warm and

[For full version visit the website](https://www.magain.com.au/property/28-carriage-avenue-sheidow-park-sa/8424496)

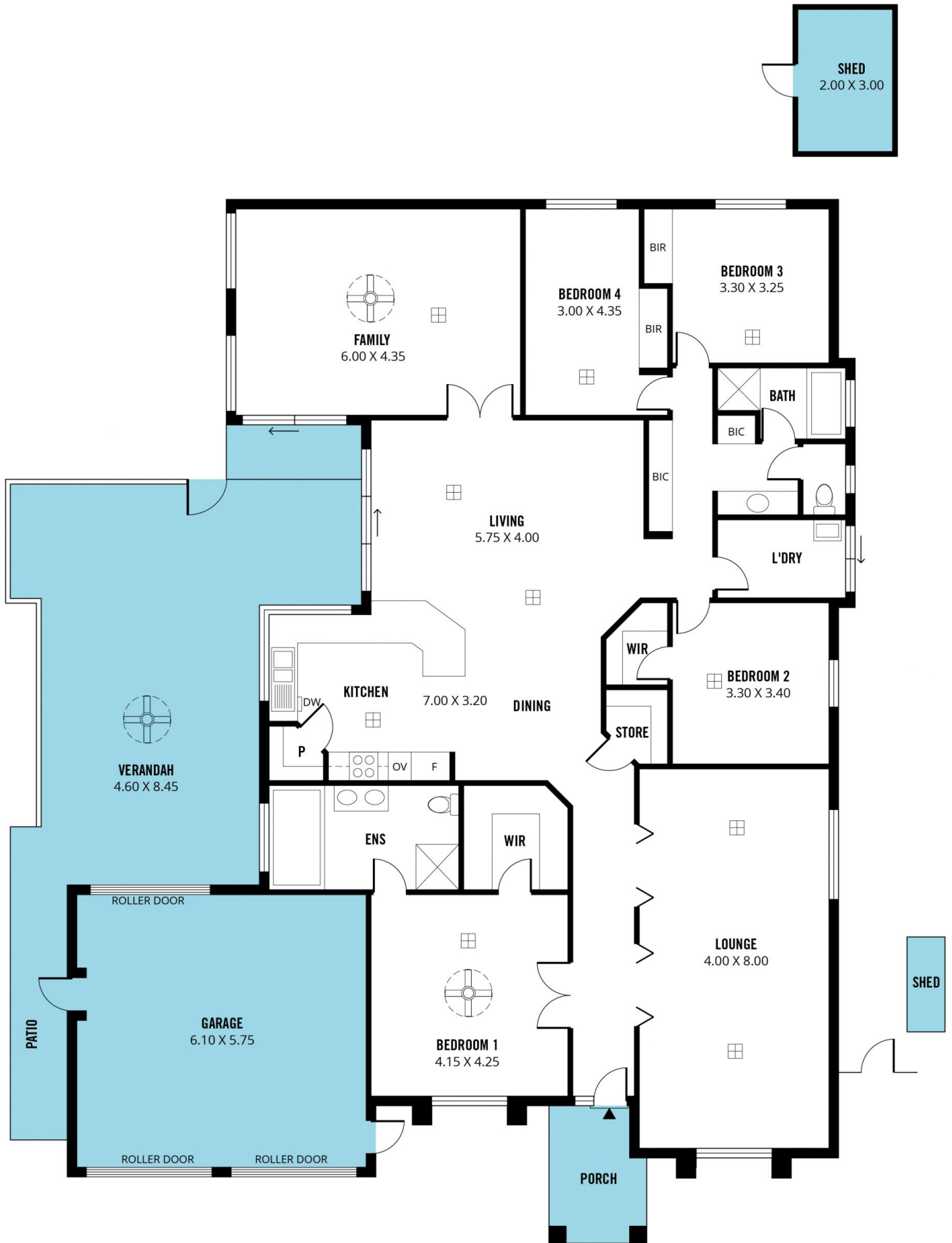
Type : House
Building Size : 28 sqm
Land Size : 614 sqm
View : <https://www.magain.com.au/property/28-carriage-avenue-sheidow-park-sa/8424496>



Travis Denham
08 8398 1494

<https://www.magain.com.au>
Magain Real Estate

T17, 525 Brighton Road Brighton SA
08 8398 1494



Scale in metres. This drawing is for illustration purposes only. All measurements are approximate and details intended to be relied upon should be independently verified.

Produced by **The Fotobase Group**