

MAGAIN



17 Eliza Place PANORAMA SA

2  1  2 

Travis Denham & Chanelle Zadey are excited to present to the market, 17 Eliza Place, Panorama.

Situated in the scenic and peaceful suburb of Panorama and amongst other quality home's sits this beautifully presented, two-bedroom property. Positioned on a generous 732 sqm (approx.) block and featuring a functional floorplan, a spacious front living area, not to mention the exceptionally prominent location, this property is perfect for the first home buyers, small families and the savvy investors alike.

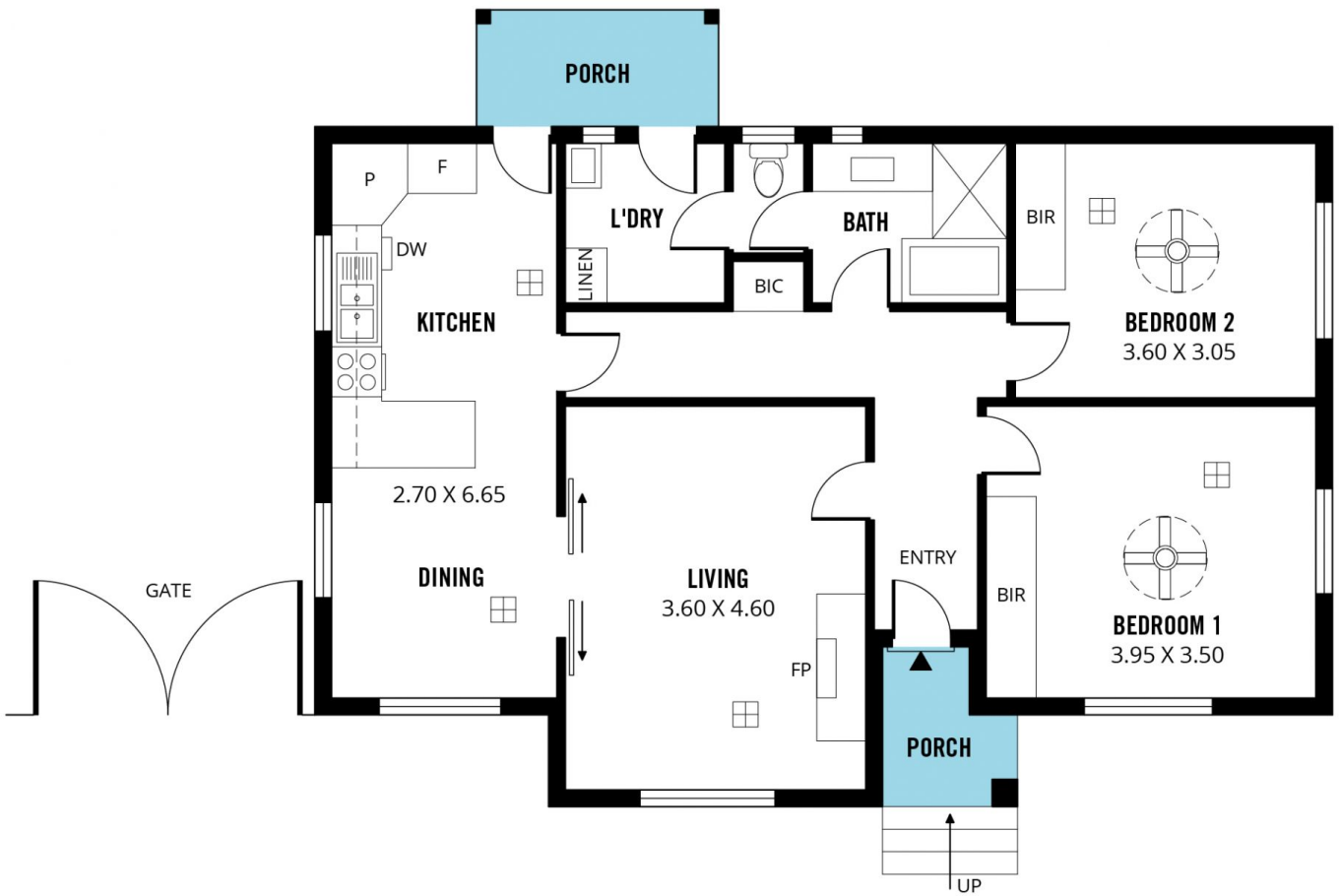
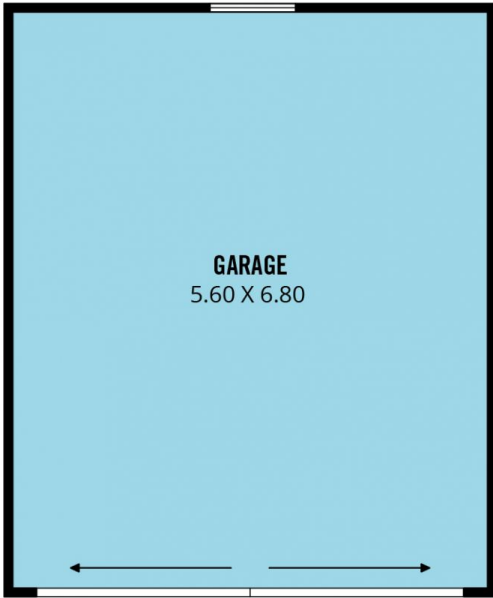
From the moment you step inside, you will notice just how well the current owner has maintained and updated this stunning property.

[For full version visit the website](https://www.magain.com.au/property/17-eliza-place-panorama-sa/8424529)

Type : House
Building Size : 10 sqm
Land Size : 732 sqm
View : <https://www.magain.com.au/property/17-eliza-place-panorama-sa/8424529>



Travis Denham
08 8398 1494



Scale in metres. This drawing is for illustration purposes only. All measurements are approximate and details intended to be relied upon should be independently verified.

Produced by **The Fotobase Group**