

# MAGAIN



## 1 Teal Place NOARLUNGA DOWNS SA

4 🛏 2 🚿 1 🚗

Travis Denham & Chanelle Zadey are excited to present to the market, 1 Teal Place, Noarlunga Downs.

Positioned upon a generous 669sqm (approx.) corner block and in close proximity to a number of local amenities, sits this beautifully presented four bedroom family home which is sure to impress. With genuine street presence, a spacious and versatile floorplan including a large open plan area and a delightful outdoor entertaining space; not to mention the beautifully manicured gardens, this property will not be on the market for long.

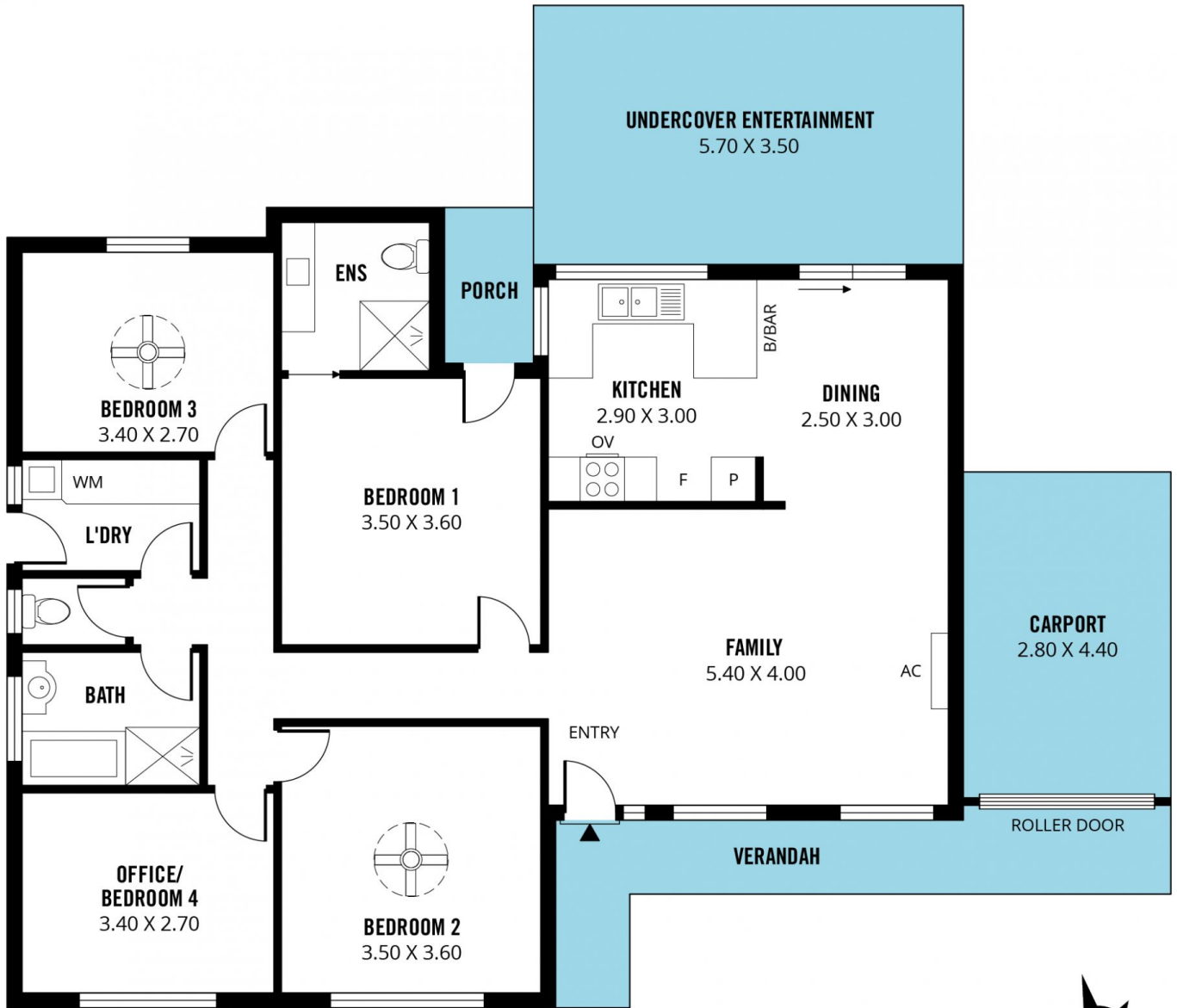
From the moment you step into this home, you will notice the abundance of quality features and fittings throughout, from the modern downlights to the flooring and carpets -

[For full version visit the website](https://www.magain.com.au/property/1-teal-place-noarlunga-downs-sa/8424538)

**Type** : House  
**Price** : \$ 540,000  
**Building Size** : 13 sqm  
**Land Size** : 669 sqm  
**View** : <https://www.magain.com.au/property/1-teal-place-noarlunga-downs-sa/8424538>



**Travis Denham**  
08 8398 1494



Scale in metres. This drawing is for illustration purposes only. All measurements are approximate and details intended to be relied upon should be independently verified.

Produced by **The Fotobase Group**