

MAGAIN



30 Yeltana Avenue HUNTFIELD HEIGHTS SA

3 2 3

Situated in the beautiful and highly sought-after Paringa Estate is this delightful three bedroom, two bathroom home. With perfectly manicured gardens, a low maintenance block and solar panels for energy efficiency, a spacious & versatile floorplan, generous outdoor entertaining area as well as space for multiple car storage, this home truly has so much to offer and is perfect for the first home buyers, savvy investors or growing families. Hurry to view this home as it will not be on the market for long.

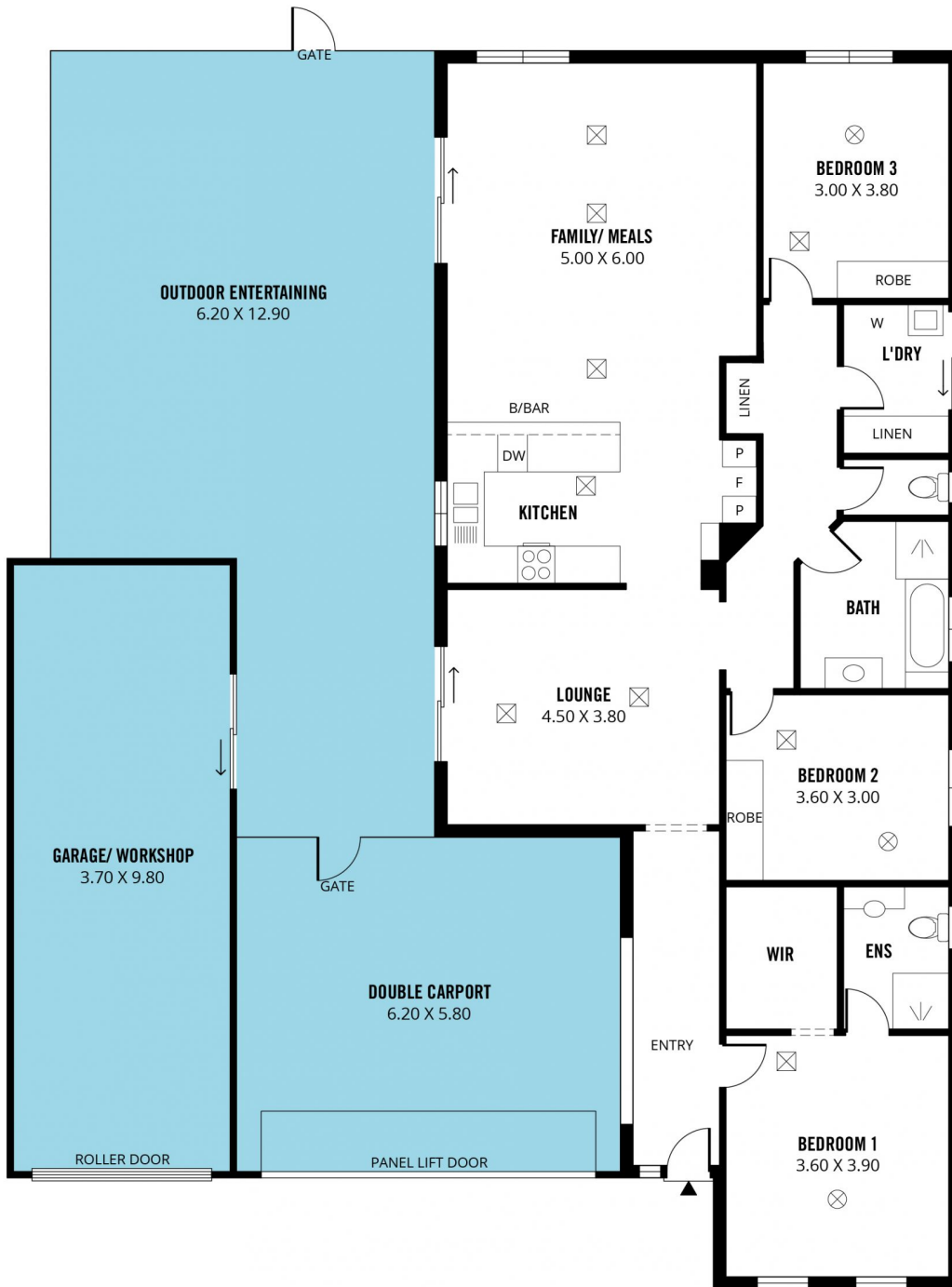
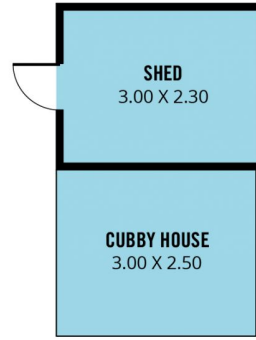
As you enter the home, to the right is the spacious master bedroom that benefits from two picture windows with quality timber venetian blinds, a modern ensuite and walk-in robe. Continuing through the home is the formal

[For full version visit the website](https://www.magain.com.au/property/30-yeltana-avenue-huntfield-heights-sa/8424579)

Type : House
Building Size : 19 sqm
Land Size : 556 sqm
View : <https://www.magain.com.au/property/30-yeltana-avenue-huntfield-heights-sa/8424579>



Travis Denham
08 8398 1494



Scale in metres. This drawing is for illustration purposes only. All measurements are approximate and details intended to be relied upon should be independently verified.

Produced by **The Fotobase Group**