

# MAGAIN



## 8 Park Terrace PLYMPTON PARK SA

3  1  1 

Situated in the highly sought-after suburb of Plympton Park is this well-presented and low maintenance three-bedroom home. With genuine street appeal, a spacious and functional floorplan, a generous backyard area and in prime location, this property is perfect for the growing family, first home buyers and the savvy investor alike.

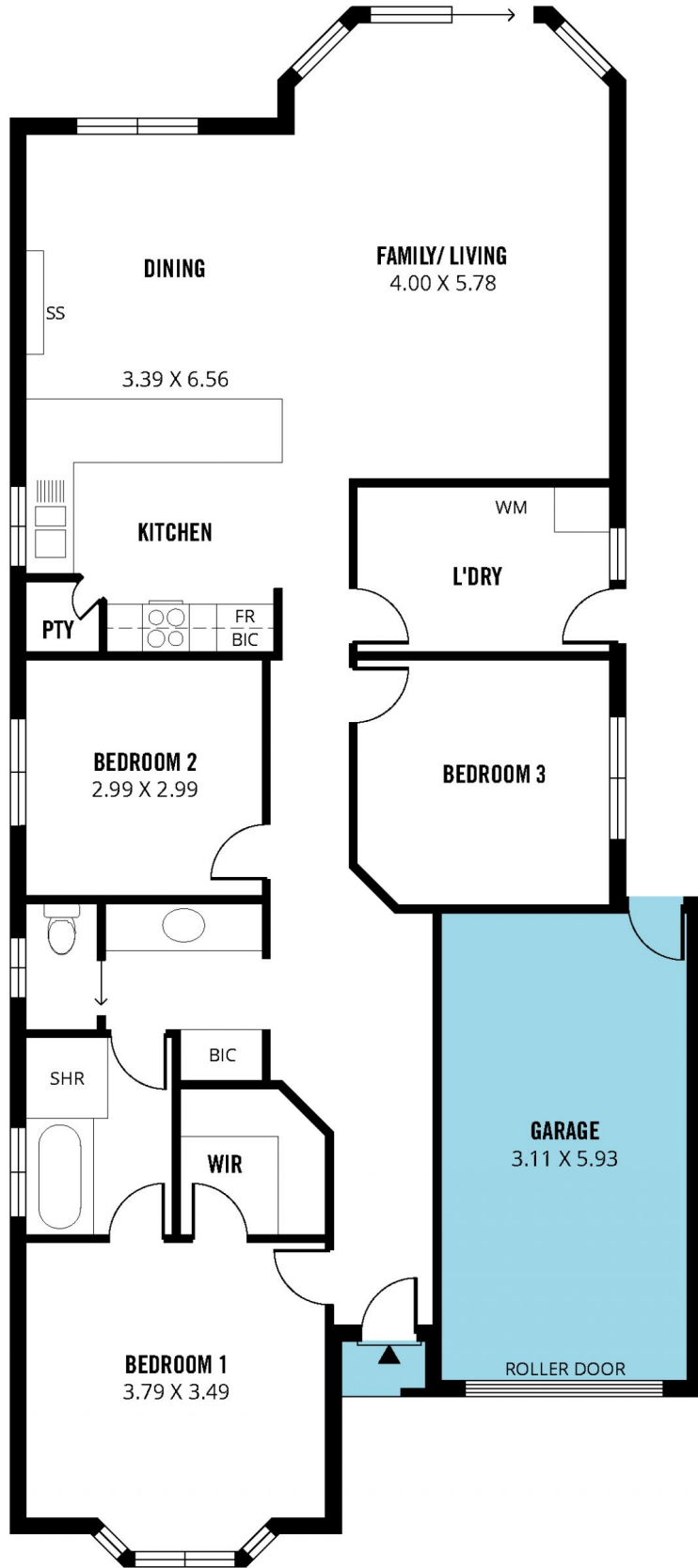
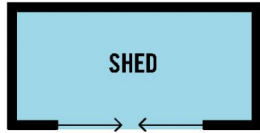
As we enter the home, you are greeted with a charming walk-way. To the left of the entry is the master bedroom which features a stunning bay window, a large walk in robe and access to the two-way bathroom as well as roller shutters on the windows to hold back the heat and for extra security. The bathroom features a full-sized bath, shower and separate toilet with spacious vanity unit; much to the delight of the growing family. Continuing down the hallway

[For full version visit the website](https://www.magain.com.au/property/8-park-terrace-plympton-park-sa/8424604)

**Type** : House  
**Building Size** : 15 sqm  
**Land Size** : 440 sqm  
**View** : <https://www.magain.com.au/property/8-park-terrace-plympton-park-sa/8424604>



**Travis Denham**  
08 8398 1494



Scale in metres. This drawing is for illustration purposes only. All measurements are approximate and details intended to be relied upon should be independently verified. Produced by **The Fotobase Group**