

MAGAIN



232 O'Sullivan Beach Road MORPHETT VALE SA

3  1  1 

Situated in the highly sought-after suburb of Morphett Vale and with all of the hard work already done, this spacious, modern, three-bedroom home is move-in ready! With a generous 704sqm (approx.) block, solar panels for energy efficiency, a functional floorplan and additional family room as well as being positioned in an exceptionally convenient location - this home is ideal for the first home buyers, investors and those looking to downsize without compromising on space and lifestyle.

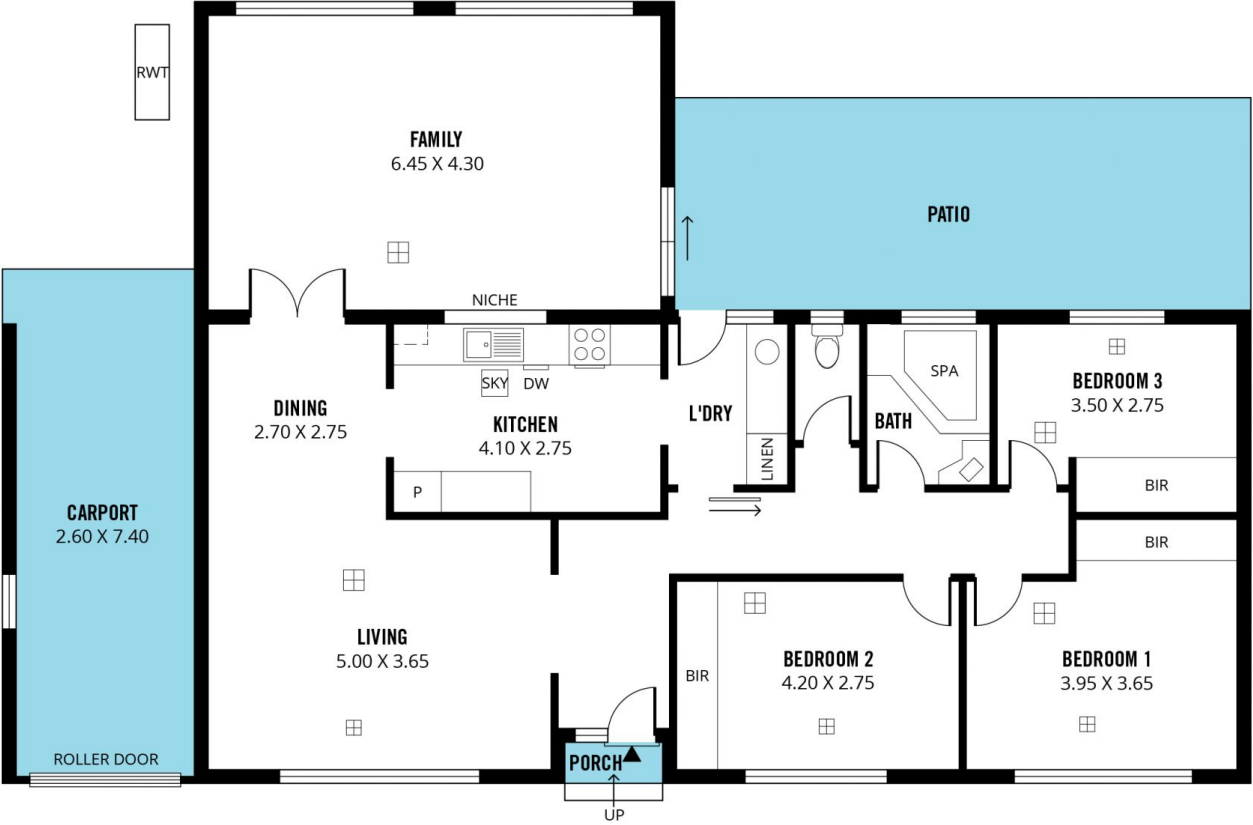
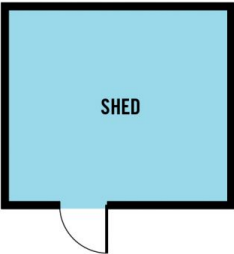
As we enter the home, we are greeted with a charming entry. To the left of the entry you will find the front-facing living/dining area that features a large picture window, allowing an abundance of natural light to fill the space. Adjacent you will find the second family area that spans a

[For full version visit the website](https://www.magain.com.au)

Type : House
Building Size : 15 sqm
Land Size : 704 sqm
View : <https://www.magain.com.au/property/232-osullivan-beach-road-morphett-vale-sa/8424615>



Travis Denham
08 8398 1494



Scale in metres. This drawing is for illustration purposes only. All measurements are approximate and details intended to be relied upon should be independently verified.

Produced by **The Fotobase Group**