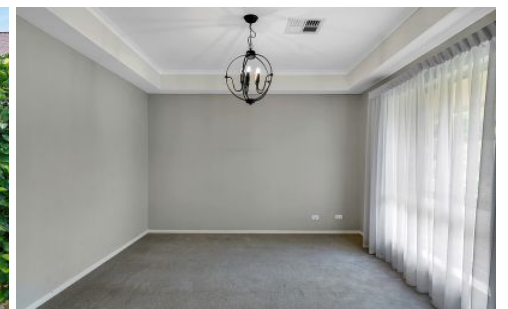


MAGAIN



8 Berlin Terrace ABERFOYLE PARK SA

3  1  2 

Located in a quiet and peaceful terrace, in the highly sought-after suburb of Aberfoyle Park is this delightful three bedroom, Sterling built, family home. With undeniable street appeal, a spacious and versatile floorplan, quality fixtures and fittings throughout and a beautiful outdoor entertaining area, this home present exceptional value and you won't want to miss out on viewing before it is snapped up.

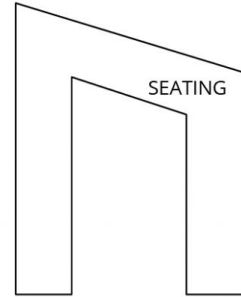
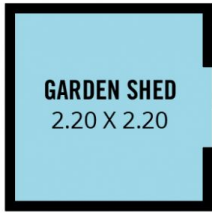
As you enter the home you are greeted with a generous, front-facing living room that benefits from a large picture window that spills an abundance of natural light into the space. Continuing through the home we reach the open plan kitchen, family/dining area which is both spacious & versatile. The kitchen features modern white cabinetry,

[For full version visit the website](https://www.magain.com.au/property/8-berlin-terrace-aberfoyle-park-sa/8424637)

Type : House
Building Size : 12 sqm
Land Size : 318 sqm
View : <https://www.magain.com.au/property/8-berlin-terrace-aberfoyle-park-sa/8424637>



Travis Denham
08 8398 1494



Scale in metres. This drawing is for illustration purposes only. All measurements are approximate and details intended to be relied upon should be independently verified.

Produced by **The Fotobase Group**