

MAGAIN



4 Pimelea Crescent Flagstaff Hill SA

3 2 2

Perfectly positioned in the prestigious 'Craigburn Estate', this stunning Federation home showcases a premium quality build, and innovative floorplan.

Upon entry to this immaculately presented family home, you are greeted with grand staircase, impressive high ceilings and spectacular ornate ceiling roses and cornices. A beautiful bay window fills the magnificent formal lounge with an abundance of natural light, filtering through to the large formal dining area. The practical family and meals area with a gas fire place for instant warmth, surrounds the impressive kitchen with ample cupboard space and walk-in pantry. A 3rd toilet with vanity, laundry and access to the garage complete the ground level of the home.

Type : House
Price : \$ 840,000
Building Size : 227 sqm
Land Size : 467 sqm
View : <https://www.magain.com.au/property/4-pimelea-crescent-flagstaff-hill-sa/8424802>

[For full version visit the website](https://www.magain.com.au/property/4-pimelea-crescent-flagstaff-hill-sa/8424802)



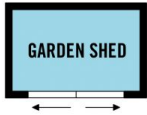
Nathan Brown
08 8398 1494



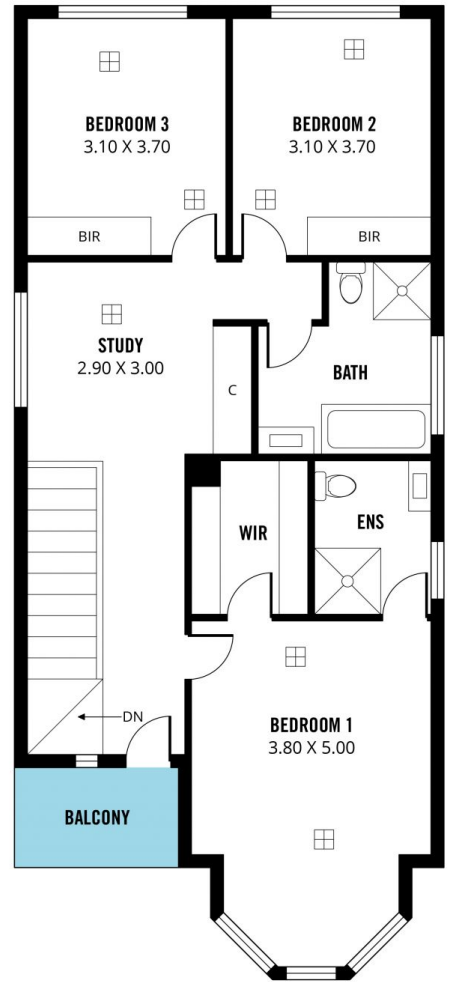
Travis Denham
08 8398 1494

<https://www.magain.com.au>
Magain Real Estate

T17, 525 Brighton Road Brighton SA
08 8398 1494



GROUND FLOOR



FIRST FLOOR



Scale in metres. This drawing is for illustration purposes only. All measurements are approximate and details intended to be relied upon should be independently verified.

Produced by **The Fotobase Group**