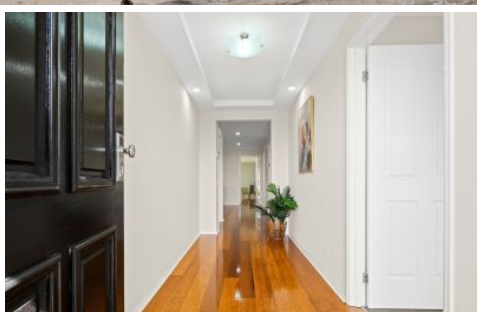


MAGAIN



12 Newfield Drive Reynella SA

Travis Denham and Chris Wright present to the market, this beautiful family residence located at 12 Newfield Drive, Reynella.

Showcasing modern design elements throughout a highly spacious and functional floorplan, inclusive of a delightful outdoor entertaining area, this property is sure to impress. Complimented by the primal location this property is located in, including close proximity to local amenities such as shops, schools and parks, this home is the perfect fit for first home buyers, the growing family and savvy investors alike.

Entering into the home, it is hard not to ignore the impeccable condition the current owners have maintained.

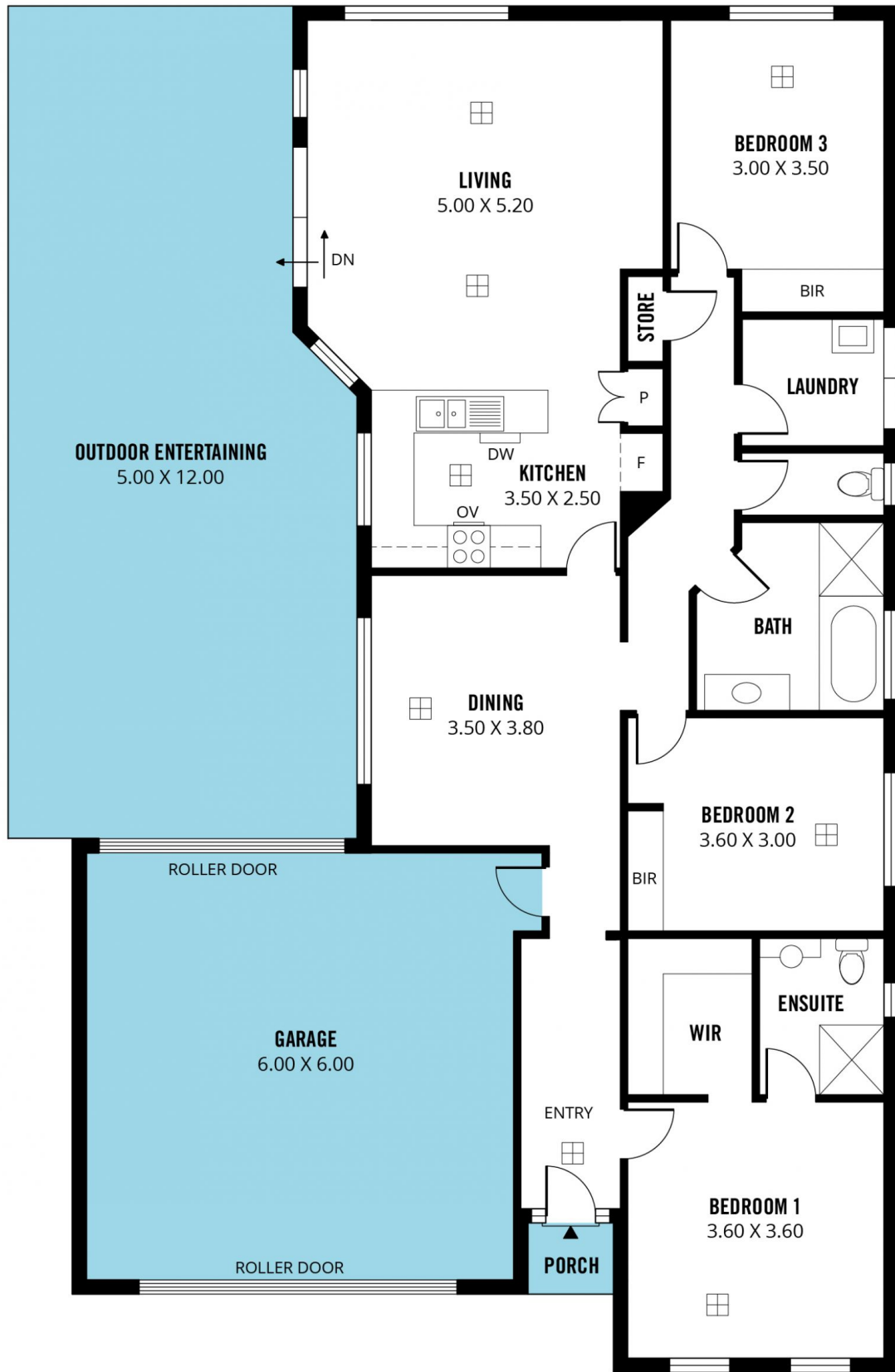
[For full version visit the website](https://www.magain.com.au/property/12-newfield-drive-reynella-sa/8424851)

3 2 2

Type : House
Price : \$ 665,000
Building Size : 165 sqm
Land Size : 450 sqm
View : <https://www.magain.com.au/property/12-newfield-drive-reynella-sa/8424851>



Travis Denham
08 8398 1494



Scale in metres. This drawing is for illustration purposes only. All measurements are approximate and details intended to be relied upon should be independently verified. Produced by **The Fotobase Group**