

MAGAIN



11 Chamberlain Drive Christie Downs SA

3  1  1 

Nathan Brown is excited to welcome to the market 11 Chamberlain Drive, Christie Downs.

Positioned within close proximity to local amenities such as shops, schools and parks, this quality home in an exceptional location is sure to appeal to first home buyers, the growing family and savvy investors alike. Offering a fully functional floorplan, inclusive of open plan living and dining, and a spacious verandah, this property is packed with features you'll be sure to love.

Entering into the home, it is simply hard to ignore the warm and welcoming ambiance that this home embodies, with timber-style flooring complimented by large picture windows featured throughout.

[For full version visit the website](https://www.magain.com.au/property/11-chamberlain-drive-christie-downs-sa/8424879)

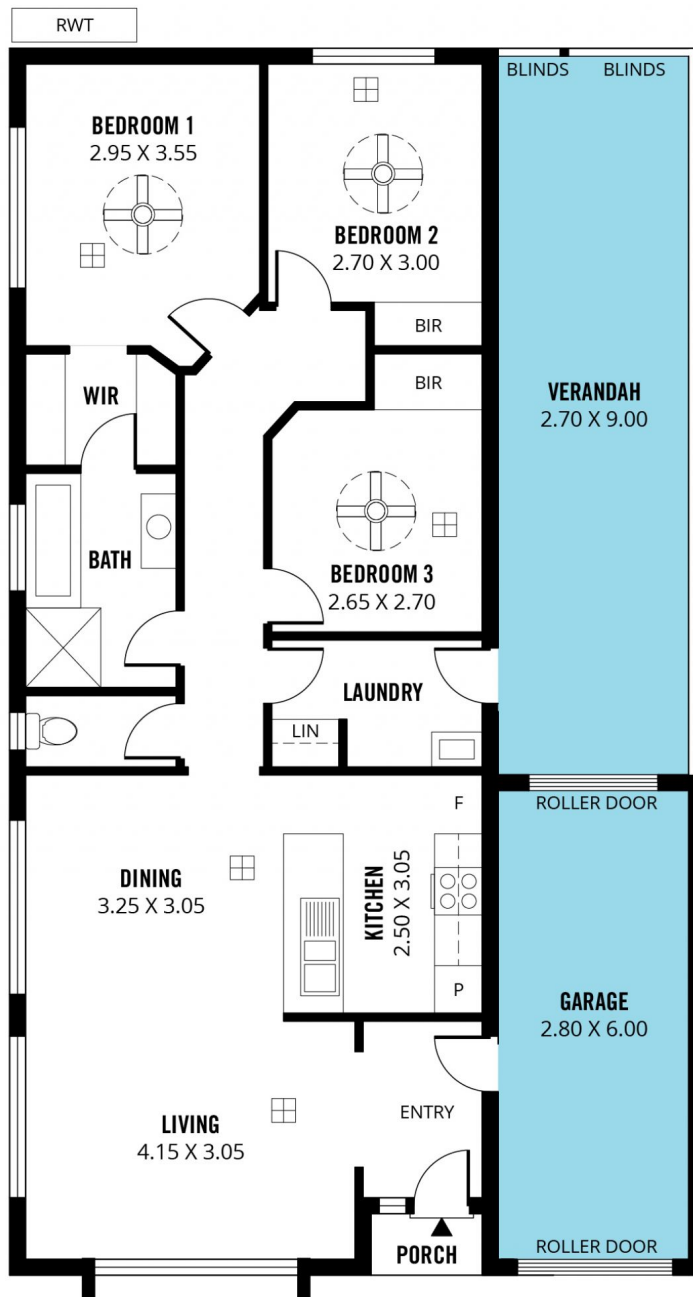
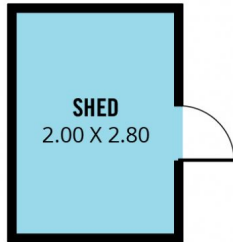
Type : House
Price : \$ 517,075
Building Size : 107 sqm
Land Size : 350 sqm
View : <https://www.magain.com.au/property/11-chamberlain-drive-christie-downs-sa/8424879>



Nathan Brown
08 8398 1494

<https://www.magain.com.au>
Magain Real Estate

T17, 525 Brighton Road Brighton SA
08 8398 1494



Scale in metres. This drawing is for illustration purposes only. All measurements are approximate and details intended to be relied upon should be independently verified. Produced by **The Fotobase Group**