

MAGAIN



16/13 Epstein Drive Morphett Vale SA

2  1 

Travis Denham and Michelle Draper present to the market, this delightful two-bedroom unit located at 16/13 Epstein Drive, Morphett Vale.

Within close proximity to local amenities such as shops and schools, this home presents the perfect opportunity for first home buyers and investors alike. Featuring a functional and accommodating floorplan, this lovely residence is sure to tick all your boxes.

The formal living area presents as the perfect spot to sit and enjoy your favourite films during those colder winter months, or just unwind at the end of a busy day.

The kitchen is fully functional, featuring an abundance of

[For full version visit the website](https://www.magain.com.au/property/16-13-epstein-drive-morphett-vale-sa/8424-928)

Type : Unit
Price : \$ 421,000
Building Size : 83 sqm
View : <https://www.magain.com.au/property/16-13-epstein-drive-morphett-vale-sa/8424-928>

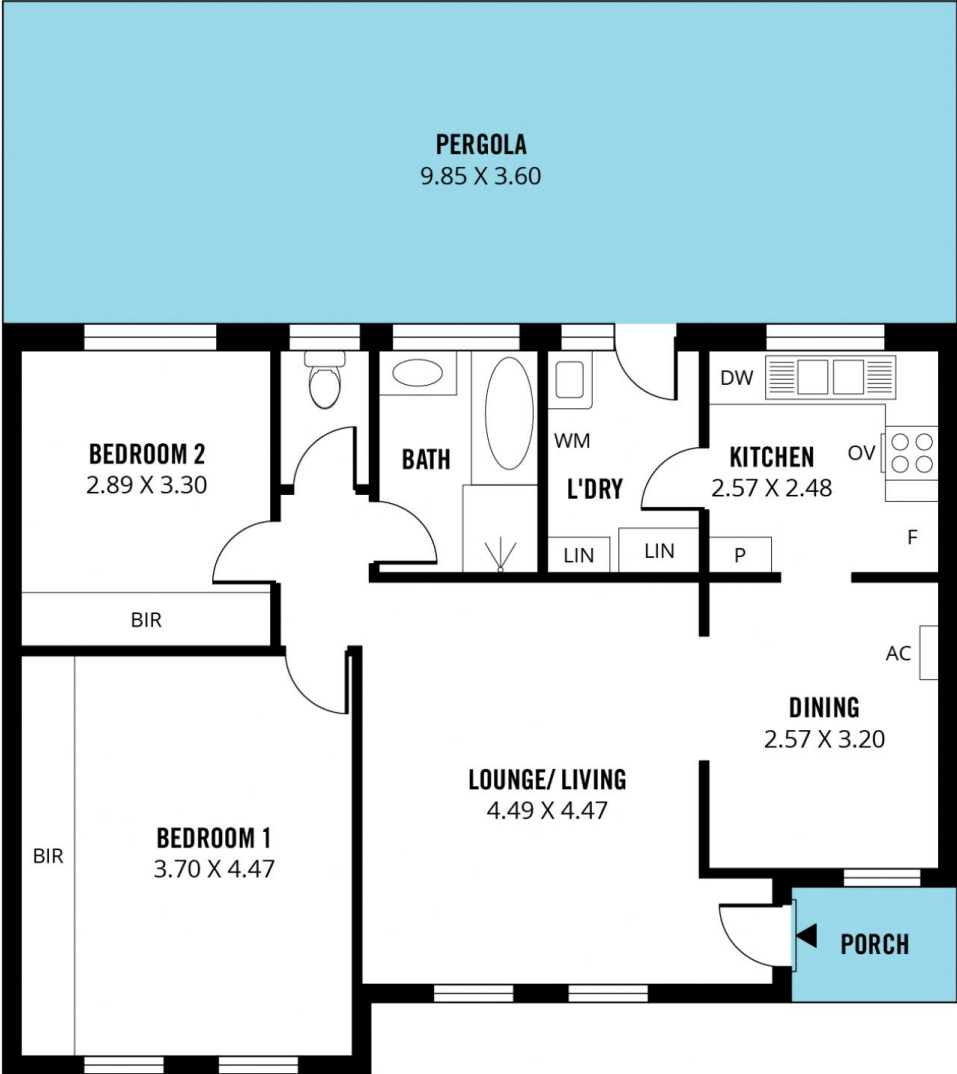


Travis Denham
08 8398 1494



Michelle Draper
08 8398 1494

SHED
2.30 X 2.30



Scale in metres. This drawing is for illustration purposes only. All measurements are approximate and details intended to be relied upon should be independently verified. Produced by **The Fotobase Group**