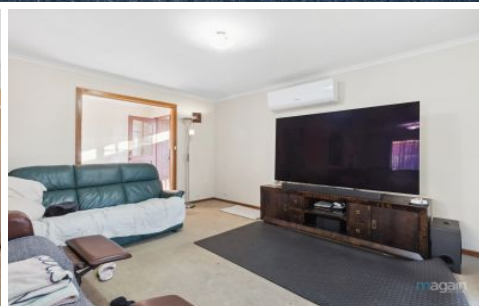
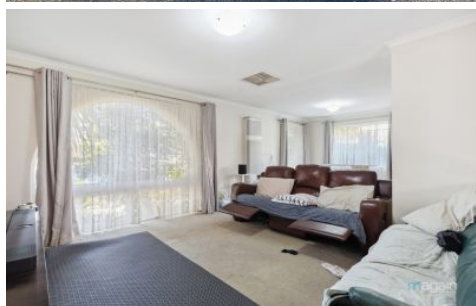


MAGAIN



90 Wheatsheaf Road Morphett Vale SA

3  1  1 

Please contact Travis Denham and Andrew Fox from Magain Real Estate for all your property advice.

This property is currently tenanted at \$1040 per fortnight with a lease date until 05/05/2025.

Originally built in 1977 and perfectly positioned in a highly sought-after location, this charming Torrens-titled three-bedroom home effortlessly combines classic character with tasteful modern updates. Designed with both style and practicality in mind, it offers a warm, functional living space that's ideal for first home buyers, savvy investors, or those looking to downsize without compromise.

[For full version visit the website](https://www.magain.com.au/property/90-wheatsheaf-road-morphett-vale-sa/8425052)

Type : House
Price : \$ 701,500
Building Size : 110 sqm
Land Size : 590 sqm
View : <https://www.magain.com.au/property/90-wheatsheaf-road-morphett-vale-sa/8425052>



Travis Denham
08 8398 1494



Andrew Fox
08 8398 1494

<https://www.magain.com.au>
Magain Real Estate

T17, 525 Brighton Road Brighton SA
08 8398 1494



Scale in metres. This drawing is for illustration purposes only. All measurements are approximate and details intended to be relied upon should be independently verified.

Produced by **The Fotobase Group**