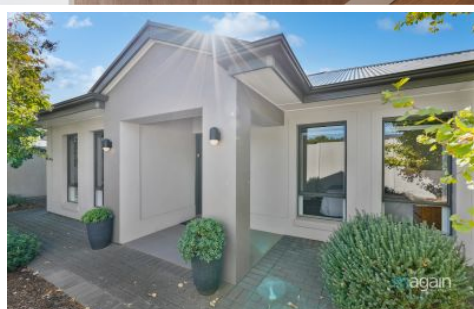


MAGAIN



2A Don Avenue Seacliff Park SA

3 2 4

Please contact Sandy Robinson from Magain Real Estate for all your property advice.

Behind a secure rendered fence and impressive gate, be wowed by the oversized 1200mm front door, setting the tone for what lies beyond. Step inside and onto freshly laid timber laminate floors, illuminated by a striking architectural pendant light.

To your right, discover a beautifully appointed master suite. Large picture windows frame the serene views of the private front yard and floods the room with natural light. Storage is abundant, with a walk-behind robe offering generous hanging space, plus additional built-in robes and drawers, so there's no need to share. The stylish ensuite

[For full version visit the website](https://www.magain.com.au/property/2a-don-avenue-seacliff-park-sa/8425061)

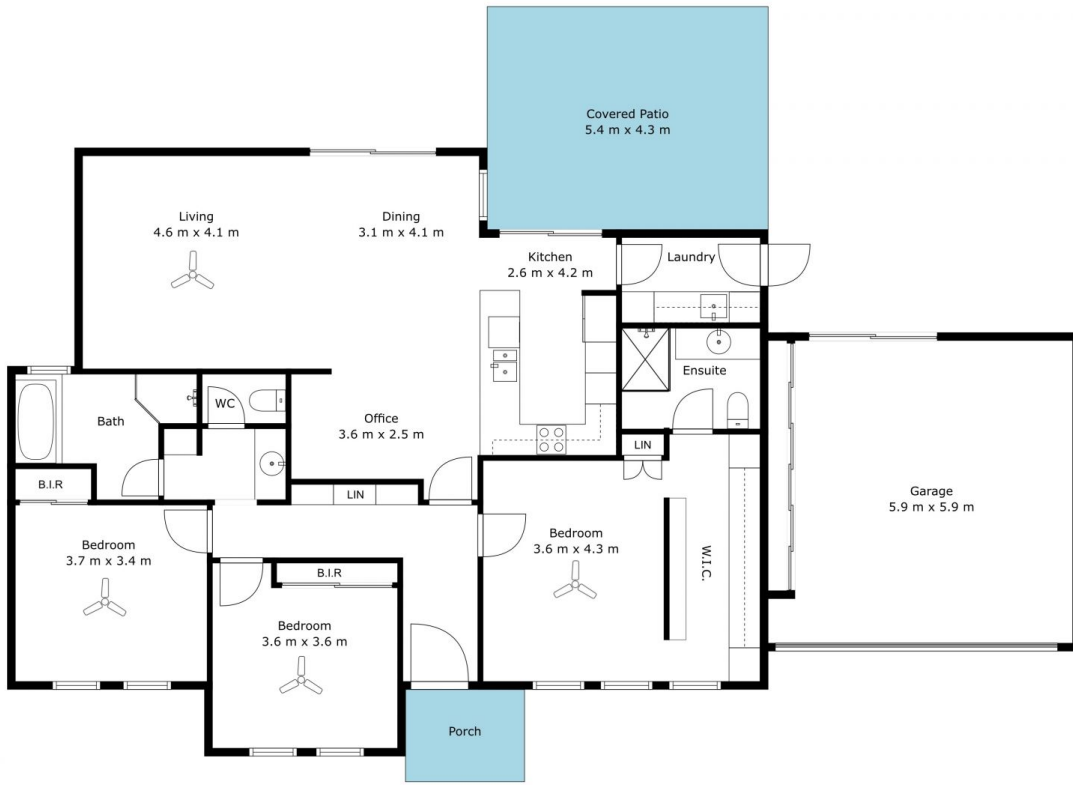
Type : House
Price : \$ 1,160,000
Building Size : 217 sqm
Land Size : 410 sqm
View : <https://www.magain.com.au/property/2a-don-avenue-seacliff-park-sa/8425061>



Sandy Robinson
08 8398 1494

<https://www.magain.com.au>
Magain Real Estate

T17, 525 Brighton Road Brighton SA
08 8398 1494



Living	150 SQM
Garage	40 SQM
Covered Patio	23 SQM
Porch	4 SQM
Total Approx	217 SQM



Scale In Metres. This Drawing Is For Illustration Purposes Only. All Measurements Are Approximate And Details Intended To Be Relied Upon Should Be Independently Verified. All Measurements Are Approximate.