

MAGAIN



32A Railway Terrace Warradale SA

3 2 1

Please contact Nathan Brown from Magain Real Estate for all your property advice.

This delightful property offers the ideal combination of convenience, comfort, and charm. Situated just a stone's throw away from the railway station and the beloved Bobby's Coffee Store, its location is unbeatable. Within a short distance, you'll find the bustling Warradale Hotel, the renowned Westfield Marion shopping center, and the picturesque shores of Brighton, all contributing to a lifestyle of ease and enjoyment.

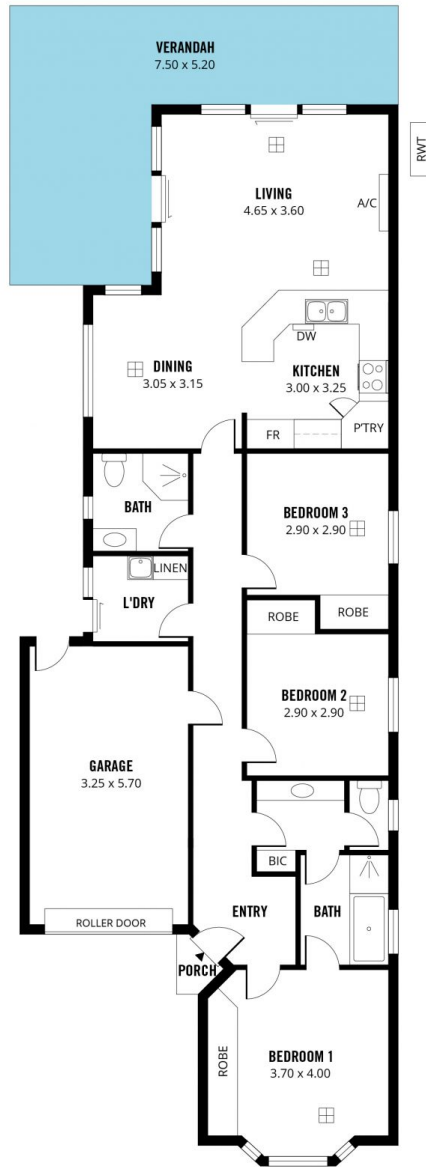
Step inside, and you'll be greeted by a home that exudes warmth and character. The inviting frontage boasts a unique charm, setting the tone for what lies within. The

[For full version visit the website](https://www.magain.com.au/property/32-a-railway-terrace-warradale-sa/8425077)

Type : House
Building Size : 126 sqm
Land Size : 300 sqm
View : <https://www.magain.com.au/property/32-a-railway-terrace-warradale-sa/8425077>



Nathan Brown
08 8398 1494



Scale in metres. This drawing is for illustration purposes only. All measurements are approximate and details intended to be relied upon should be independently verified.

Produced by **The Fotobase Group**