

MAGAIN



2 Richman Court Craighburn Farm SA

4  2  3 

Please contact Sandy Robinson from Magain Real Estate for all your property advice.

A commanding , chalet style frontage set on 802sqm (approx.) with a picturesque gully backdrop calls you home. This stunning corner property stands at three levels , seamlessly working in with the natural slope of the block. There is a place of refuge on every level.

Entering at ground level , set off Austin Court offers a three car garage, set to attract the car enthusiast or those needing a workshop from home. The vast space has just been carefully resurfaced and conveniently offers additional workshop space and storage in the main room. Additionally , two extra spaces behind doors have been incredibly fit out

[For full version visit the website](https://www.magain.com.au/property/2-richman-court-craighburn-farm-sa/8425115)

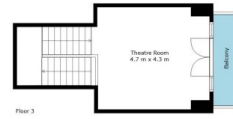
Type : House
Price : \$ 1,610,000
Building Size : 337 sqm
Land Size : 802 sqm
View : <https://www.magain.com.au/property/2-richman-court-craighburn-farm-sa/8425115>



Sandy Robinson
08 8398 1494

<https://www.magain.com.au>
Magain Real Estate

T17, 525 Brighton Road Brighton SA
08 8398 1494



Living	277	SQM
Garages	62	SQM
Workshop	13	SQM
Patio	49	SQM
Storage	18	SQM
Balcony	16	SQM
Total Approx	435	SQM

Floor 1



Scale In Metres. This Drawing Is For Illustration Purposes Only. All Measurements Are Approximate And Details Intended To Be Relied Upon Should Be Independently Verified. All Measurements Are Approximate.