

MAGAIN



1/20 Wheatsheaf Road Morphett Vale SA

2 1 1

Please contact Travis Denham and Andrew Fox from Magain Real Estate for all your property advice.

Beautifully maintained and perfectly positioned, this 2-bedroom unit offers effortless, low-maintenance living in a sought-after location. Whether you're downsizing, entering the market for the first time, or seeking a smart investment, this well-designed and immaculate home is tailored to suit a range of lifestyles.

From the moment you step inside, you're greeted by a warm, inviting ambiance. The bright and spacious living area is ideal for both relaxed everyday living and entertaining guests, enhanced by plush carpeting, large picture windows, and a split system air conditioner for

[For full version visit the website](https://www.magain.com.au/property/120-wheatsheaf-road-morphett-vale-sa/8425154)

Type : House
Price : \$ 569,250
Building Size : 99 sqm
View : <https://www.magain.com.au/property/120-wheatsheaf-road-morphett-vale-sa/8425154>



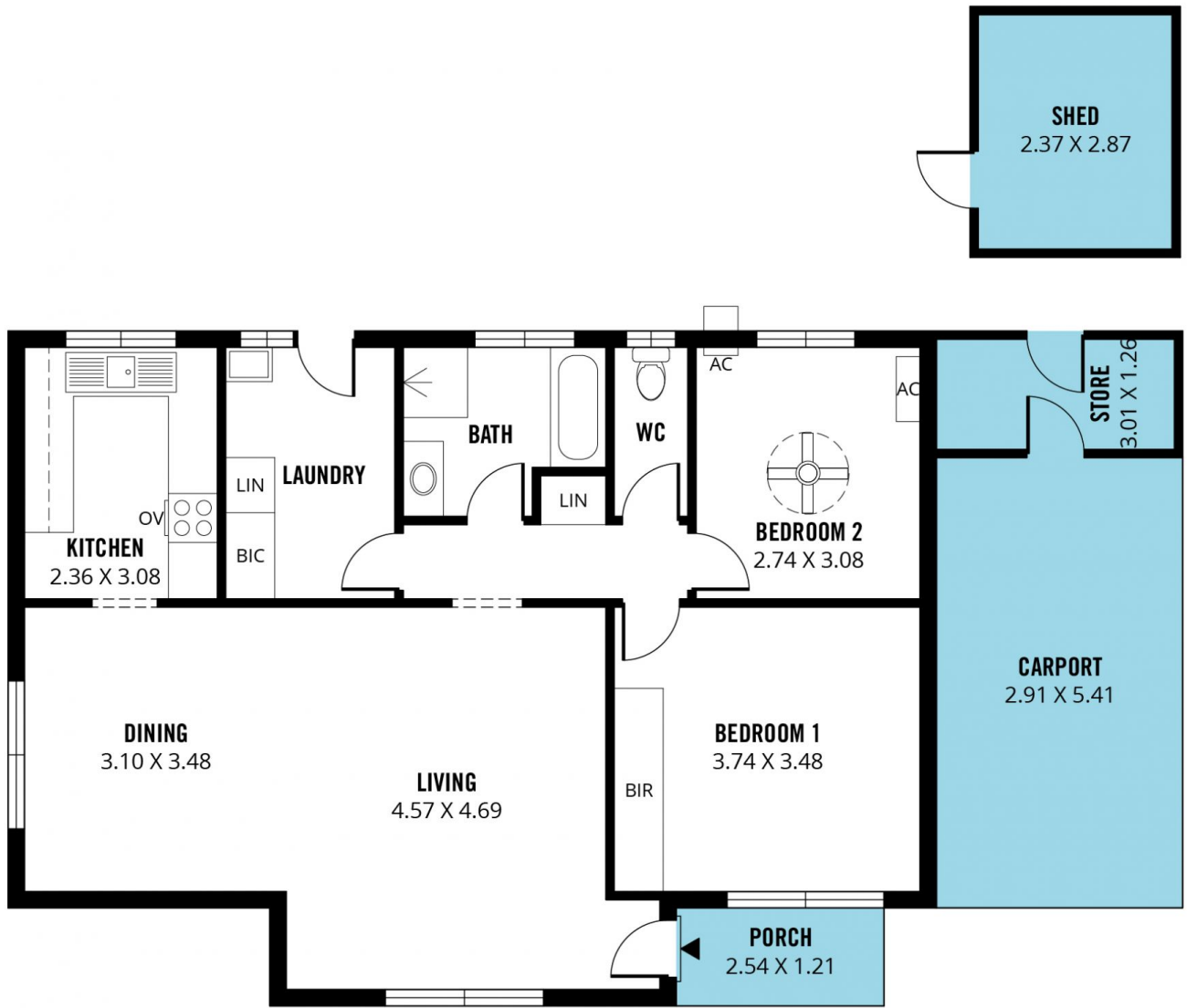
Travis Denham
08 8398 1494



Andrew Fox
08 8398 1494

<https://www.magain.com.au>
Magain Real Estate

T17, 525 Brighton Road Brighton SA
08 8398 1494



Scale in metres. This drawing is for illustration purposes only. All measurements are approximate and details intended to be relied upon should be independently verified. Produced by **The Fotobase Group**