

MAGAIN



1/1 Walkley Avenue Warradale SA

2 1 2

Please contact Sandy Robinson from Magain Real Estate for all your property advice.

This beautifully updated two-bedroom home is a rare find, offering stylish interiors, private outdoor spaces and an unbeatable location. Thoughtfully designed to maximize space and functionality, it's perfect for those seeking comfort and convenience without sacrificing garden space for yourself or four legged friends..

Beyond the private high fence or electric carport door, a manicured front yard welcomes you with lush grass and well-kept garden beds. Ornamental pear and plum trees line the fence and provide a wonderful outlook from your lounge and bedroom. Imagine sitting out here on the grass

[For full version visit the website](https://www.magain.com.au/property/11-walkley-avenue-warradale-sa/8425156)

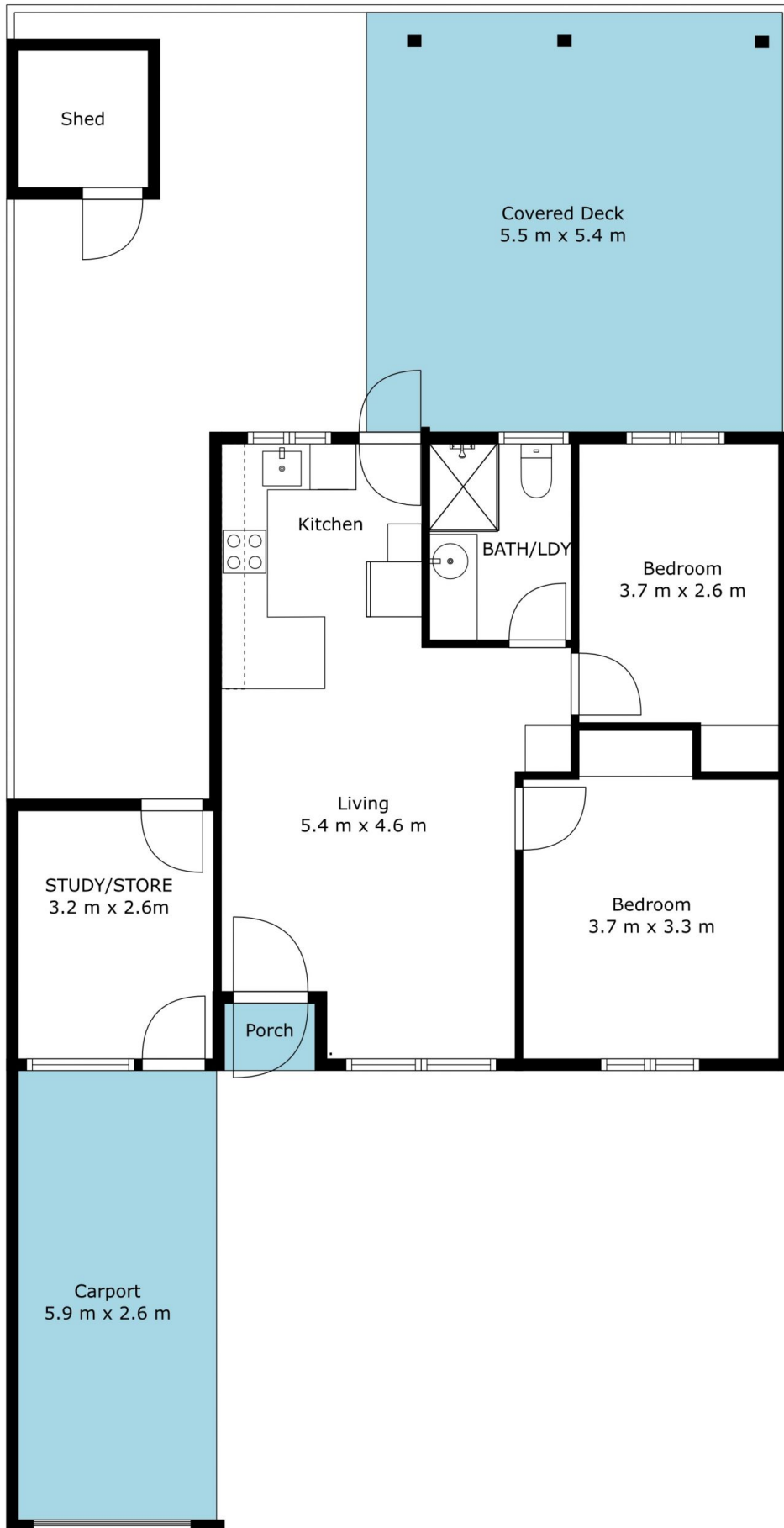
Type : Unit
Price : \$ 770,000
Building Size : 108 sqm
View : <https://www.magain.com.au/property/11-walkley-avenue-warradale-sa/8425156>



Sandy Robinson
08 8398 1494

<https://www.magain.com.au>
Magain Real Estate

T17, 525 Brighton Road Brighton SA
08 8398 1494



Internal	61 SQM
External	45 SQM
Total Approx	106 SQM



Scale in metres. This drawing is for illustration purposes only.
 All measurements are approximate and details intended to be relied upon should be independently