

MAGAIN



1a Rosslyn Street Glengowrie SA

4  2  2 

Please contact Sandy Robinson from Magain Real Estate for all your property advice.

Poised behind a raised roof portico, stylish timber slats and soft white render awaits this surprisingly spacious home. Swing open your 2400 high timber door, or enter through your lock up garage to a wide passage way central to this functional floor plan and welcoming living space.

Built in 2018 by the renowned Distinctive Homes, every detail of its meticulously planned layout reflects thoughtful craftsmanship and timeless design. It oozes a feel of home without compromising on functionality and living space!

The exterior charms with warm timber accents, a white rendered façade, expansive windows, a striking 2400mm

[For full version visit the website](https://www.magain.com.au/property/1a-rosslyn-street-glengowrie-sa/8425188)

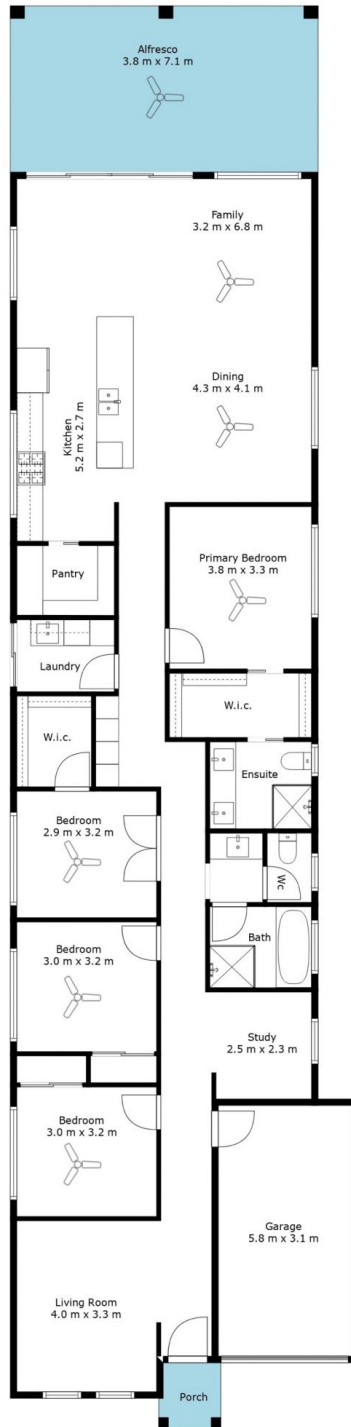
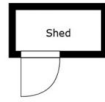
Type : House
Price : \$ 1,425,000
Building Size : 208 sqm
Land Size : 439 sqm
View : <https://www.magain.com.au/property/1a-rosslyn-street-glengowrie-sa/8425188>



Sandy Robinson
08 8398 1494

<https://www.magain.com.au>
Magain Real Estate

T17, 525 Brighton Road Brighton SA
08 8398 1494



Living	175 SQM
Garage	18 SQM
Alfresco	27 SQM
Shed	2 SQM
Porch	2 SQM
Total Approx	224 SQM



Scale in metres. This drawing is for illustration purposes only.