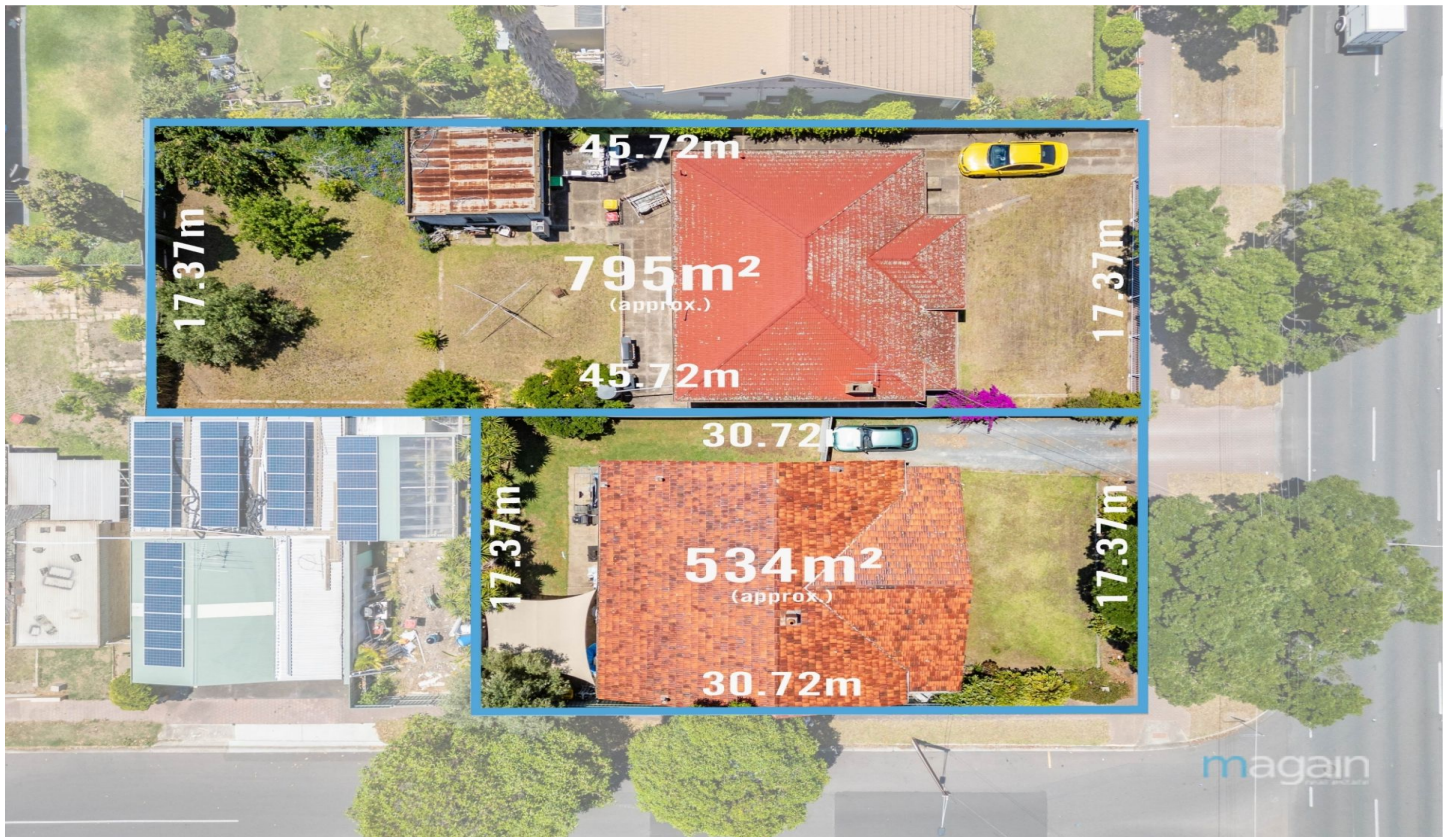


# MAGAIN



## 537 Anzac Highway Glenelg North SA

3 🏠 1 🚗

Please contact Travis Denham and Andrew Fox from Magain Real Estate for all your property advice.

**Type** : House  
**Land Size** : 1329 sqm  
**View** : <https://www.magain.com.au/property/537-anzac-highway-glenelg-north-sa/8425191>

Positioned in the highly desirable suburb of Glenelg North, these expansive allotments offer a combined land area of approximately 1,329 sqm. This rare opportunity is ideal for developers or renovators looking to capitalize on a prime location.

With a generous 34.74m frontage along Anzac Highway and an additional 30.72m frontage onto Douglas Grove (allotment 539), these properties present immense potential for a range of development projects or improvements. The existing dwellings are ready for the ultimate renovation

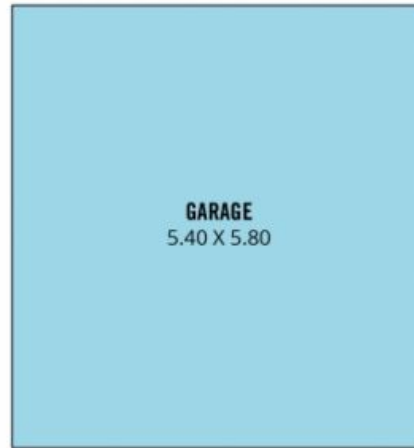


**Travis Denham**  
08 8398 1494



**Andrew Fox**  
08 8398 1494

[For full version visit the website](https://www.magain.com.au)





Scale in metres. This drawing is for illustration purposes only. All measurements are approximate and details intended to be relied upon should be independently verified. Produced by **The Fotobase Group**