

MAGAIN



216D Esplanade Seacliff SA

3  3  2 

Please contact Sandy Robinson from Magain Real Estate for all your property advice.

A rare opportunity offering the prestige of an Esplanade address with the exceptional blend of privacy and elevation, thanks to its position in the hill behind 216A and 216B. Built in 2005 and approx. 236sqm of living, this home showcases outstanding craftsmanship and thoughtful design to compliment it's surrounding landscape.

Accessed via a laneway off Seacliff Esplanade, the electric-gated entry leads to your own secure compound of just two properties. The driveway guides you up to a spacious double lock-up garage-perfect for your prized vehicles and weekend beach toys.

[For full version visit the website](https://www.magain.com.au/property/216d-esplanade-seacliff-sa/8425207)

Type : House
Price : \$ 2,000,000
Land Size : 187 sqm
View : <https://www.magain.com.au/property/216d-esplanade-seacliff-sa/8425207>



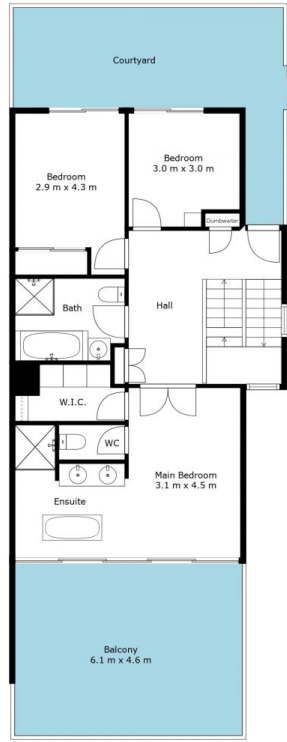
Sandy Robinson
08 8398 1494

<https://www.magain.com.au>
Magain Real Estate

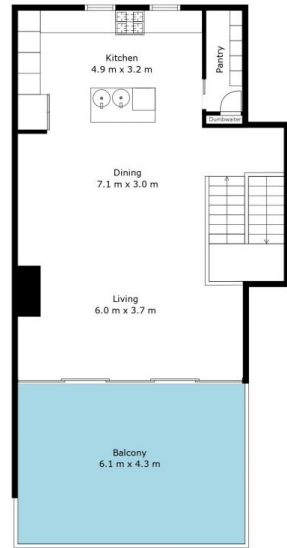
T17, 525 Brighton Road Brighton SA
08 8398 1494



Floor 1



Floor 2



Floor 3

Internal	236	SQM
External	86	SQM
Total Approx	322	SQM

Scale In Metres. This Drawing Is For Illustration Purposes Only. All Measurements Are Approximate And Details Intended To Be Relied Upon Should Be Independently Verified. All Measurements Are Approximate.

