

MAGAIN



6B Branksome Terrace Dover Gardens SA

3 2 2

Please contact Sandy Robinson from Magain Real Estate for all your property advice.

Quietly tucked away behind 6 Branksome Terrace, this well designed 2017-built home offers the perfect balance of style, functionality, and convenience.

As you arrive, the front paved area provides flexibility-ideal for an extra car or guest parking-while the sleek rendered parapet wall adds to the home's modern appeal.

Step inside through the impressive 2400mm timber door, sheltered by a welcoming portico, or enjoy the convenience of direct garage access.

[For full version visit the website](https://www.magain.com.au/property/6b-branksome-terrace-dover-gardens-sa/8425213)

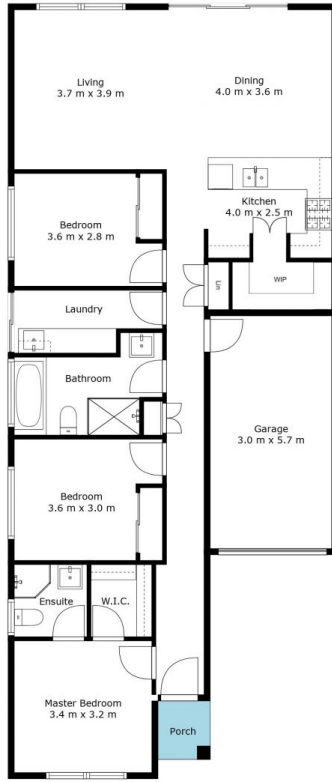
Type : House
Price : \$ 780,000
Building Size : 133 sqm
Land Size : 232 sqm
View : <https://www.magain.com.au/property/6b-branksome-terrace-dover-gardens-sa/8425213>



Sandy Robinson
08 8398 1494

<https://www.magain.com.au>
Magain Real Estate

T17, 525 Brighton Road Brighton SA
08 8398 1494



Internal	125	SQM
Porch	2	SQM
Total Approx	127	SQM

Scale In Metres. This Drawing Is For Illustration Purposes Only. All Measurements Are Approximate And Details Intended To Be Relied Upon Should Be Independently Verified. All Measurements Are Approximate.

