

MAGAIN



4a Railway Terrace Hove SA

3 2 2

Please contact Andrew Fox or Travis Denham from Magain Real Estate for all your property advice.

Showcasing a flawless integration of contemporary design features within a flexible floorplan, this exceptional property epitomizes both style and functionality. The generously proportioned interiors are meticulously crafted to meet the needs of contemporary living, featuring three well sized bedrooms and two separate living areas. What truly sets this home apart is its prime location- a short 4 minute drive to the Hove Esplanade-offering a perfect balance of coastal living, shopping convenience, and social opportunities.

Upon entry, the meticulous care and maintenance of this residence become immediately evident. Timber-style

[For full version visit the website](https://www.magain.com.au/property/4a-railway-terrace-hove-sa/8425273)

Type : House
Price : \$ 960,000
Building Size : 156 sqm
Land Size : 147 sqm
View : <https://www.magain.com.au/property/4a-railway-terrace-hove-sa/8425273>

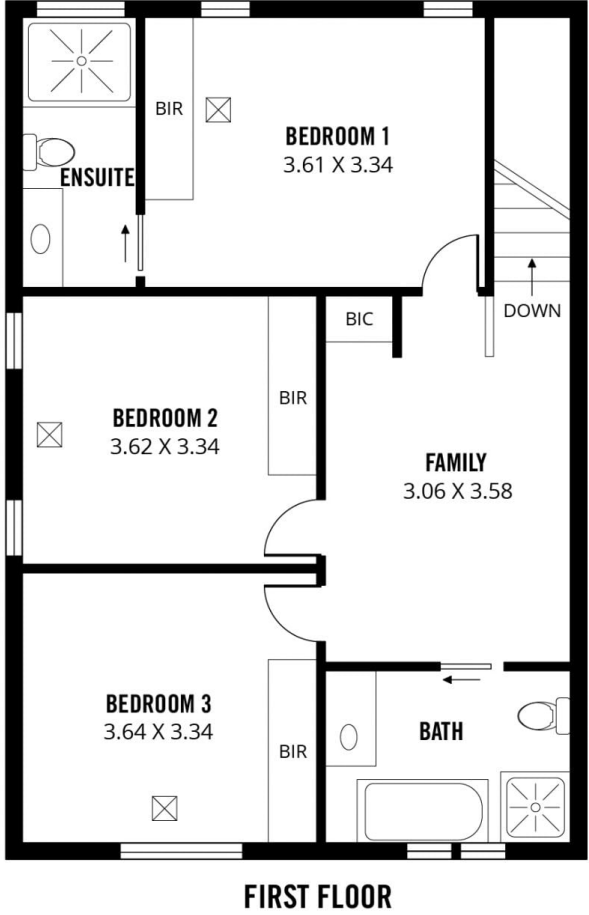
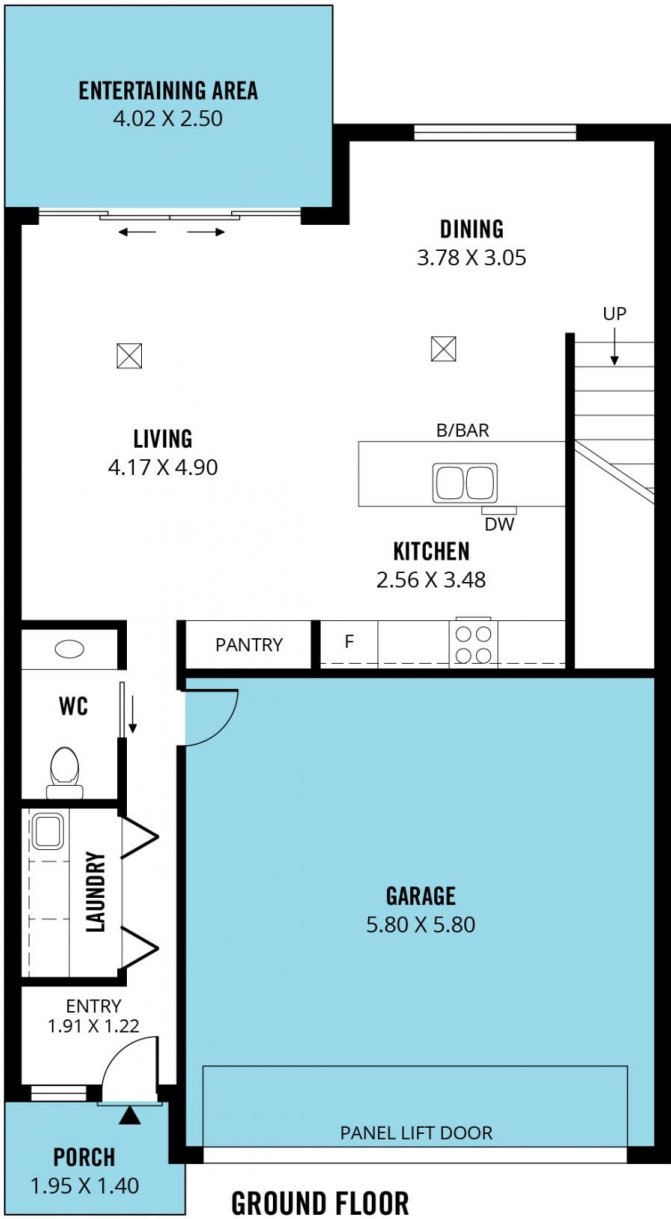


Andrew Fox
08 8398 1494



Travis Denham
08 8398 1494

RWT



Scale in metres. This drawing is for illustration purposes only. All measurements are approximate and details intended to be relied upon should be independently verified.

Produced by **The Fotobase Group**