

MAGAIN



36 Twelfth Street Gawler South SA

3 1 4

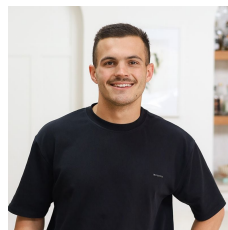
Please contact Bailey Fielke from Magain Real Estate for all your property advice.

Welcome to 36 Twelfth Street, Gawler South. Built in 1947 and set back on a marvellous 1324sqm across 2 titles, this property presents a world of opportunities to many different buyers.

With an approximate 37m frontage, the property fronts Twelfth Street, which is fast becoming one of the main roads leading into Gawler's Main CBD. With neighbouring properties along the same stretch of road setting a precedent with change of usage, one may wish to utilise the property and its 2 titles for business means (STCC) or just reside in the property and create their next chapter. The home includes:

[For full version visit the website](https://www.magain.com.au/property/36-twelfth-street-gawler-south-sa/8425300)

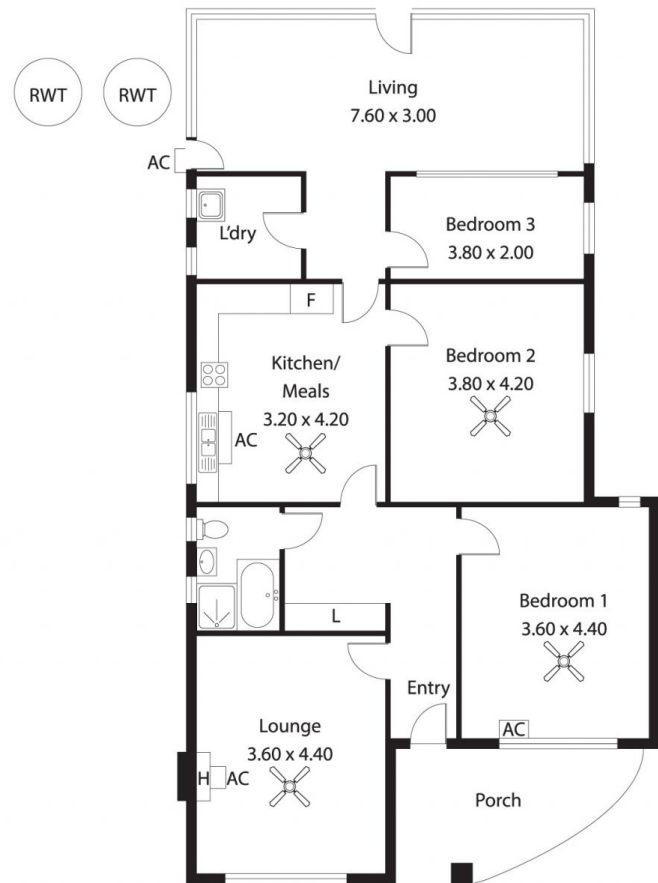
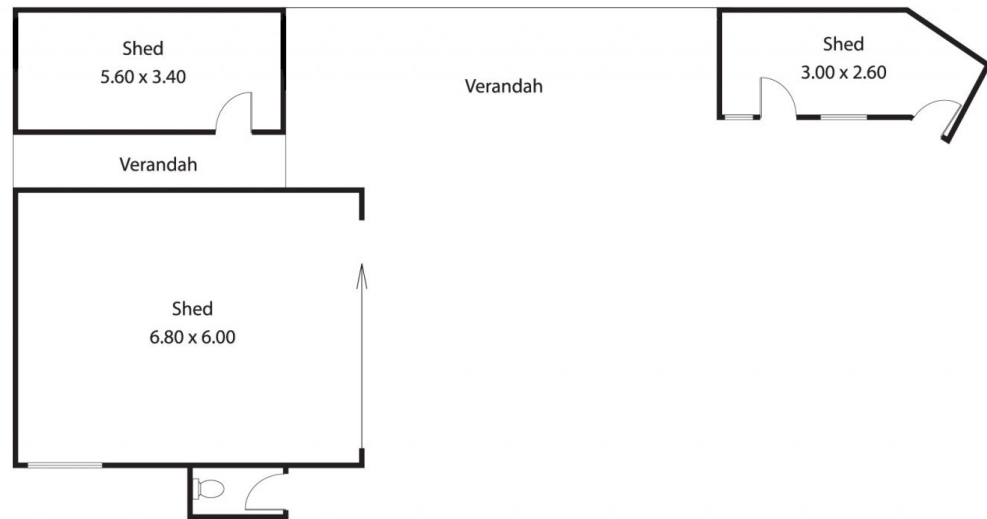
Type : House
Price : \$ 750,000
Land Size : 1324 sqm
View : <https://www.magain.com.au/property/36-twelfth-street-gawler-south-sa/8425300>



Bailey Fielke
08 8522 2715



Grant Fielke
08 8522 2715



| | |
|---------------|-------------------|
| Living: | 130.02SQ.M |
| Porch: | 10.65SQ.M |
| Verandah: | 24.00SQ.M |
| Shed: | 67.64SQ.M |
| TOTAL: | 232.31SQ.M |

This Drawing is for illustration purposes only. All measurements are internal and approximate. Details intended to be relied upon should be independently verified.