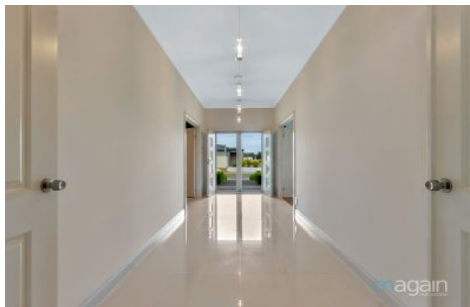


MAGAIN



7 Hazel Avenue Angle Vale SA

4 3 6

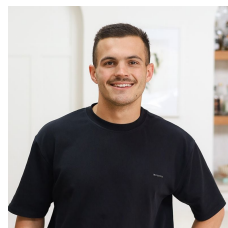
Please contact Bailey Fielke from Magain Real Estate for all your property advice.

Welcome to 7 Hazel Avenue, Angle Vale. This meticulously designed luxury Fairmont Home in the heart of the St Ives Estate, Angle Vale offers everything one can think of when buying their next property. Set back on an expansive 1800sqm corner allotment with side access, the large home is situated within walking distance to schools, transport and shopping precincts.

The home comprises of up to five well sized bedrooms, two and half bathrooms, double garage, a large shed which is accessible off Glenfield Circuit, multiple indulgent living areas and a luxurious kitchen which is rarely seen in

[For full version visit the website](https://www.magain.com.au/property/7-hazel-avenue-angle-vale-sa/8425328)

Type : House
Price : \$ 1,320,000
Land Size : 1805 sqm
View : <https://www.magain.com.au/property/7-hazel-avenue-angle-vale-sa/8425328>



Bailey Fielke
08 8522 2715



Grant Fielke
08 8522 2715

<https://www.magain.com.au>
Magain Real Estate

32 Adelaide Road Gawler South SA
08 8522 2715

7 Hazel Avenue,
ANGLE VALE



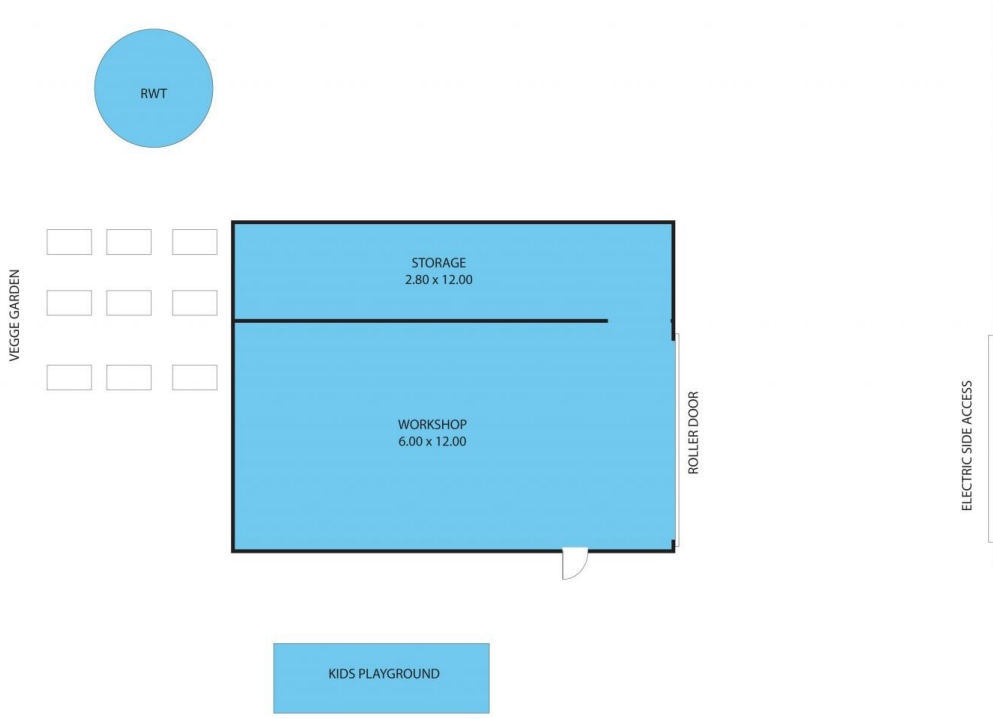
Living:	257.58SQ.M
Garage/Alfresco:	148.39SQ.M
Verandah/Porch:	30.83SQ.M
Storage:	5.60SQ.M
Workshop:	72.00SQ.M

TOTAL: 514.405Q.M

This drawing is for illustration purposes only. All measurements are internal and approximate. Details intended to be relied upon should be independently verified.



7 Hazel Avenue,
ANGLE VALE



Living: 257.58SQ.M
Garage/Alfresco: 148.39SQ.M
Verandah/Porch: 30.83SQ.M
Storage: 5.60SQ.M
Workshop: 72.00SQ.M

TOTAL: 514.40SQ.M

This drawing is for illustration purposes only. All measurements are internal and approximate. Details intended to be relied upon should be independently verified.

