

MAGAIN



1 Annie Street Hamley Bridge SA

3 1 2

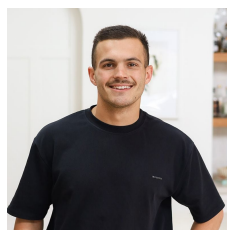
Please contact Bailey Fielke from Magain Real Estate for all your property advice.

Welcome to 1 Annie Street, Hamley Bridge. This recently renovated family home located an hour north of Adelaide and 20 minutes from Gawler resides in the heart of Hamley Bridge which is slowly becoming one of SA's most treasured country towns. This home is quietly positioned just off the main street of Hamley Bridge, with everything you could ask for only walking distance away!

This property will be sure to attract an array of keen buyers due to the large backyard being a blank canvas for whatever your mind desires. Hamley Bridge offers a great community including local bowls club, cafes, ambulance

[For full version visit the website](https://www.magain.com.au/property/1-annie-street-hamley-bridge-sa/8425335)

Type : House
Price : \$ 470,000
Land Size : 1520 sqm
View : <https://www.magain.com.au/property/1-annie-street-hamley-bridge-sa/8425335>

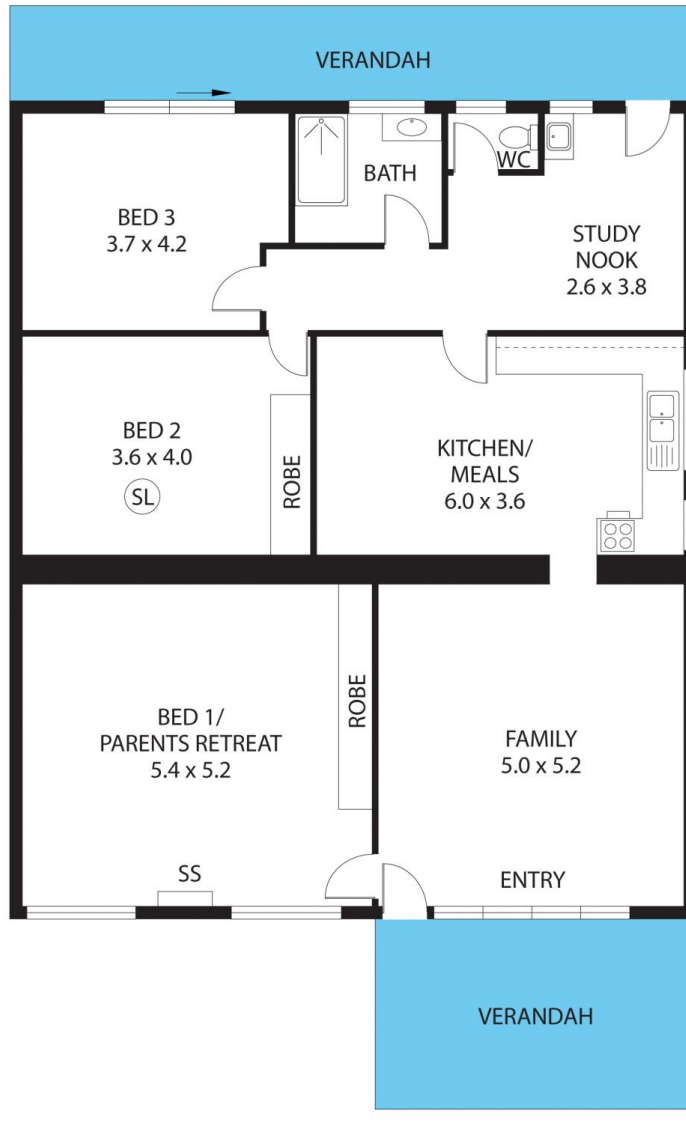


Bailey Fielke
08 8522 2715



Grant Fielke
08 8522 2715

1 Annie Street,
HAMLEY BRIDGE



Living:	140.03SQ.M
Cubby House:	4.91SQ.M
Verandah:	32.91SQ.M
TOTAL:	177.85SQ.M

This drawing is for illustration purposes only. All measurements are internal and approximate. Details intended to be relied upon should be independently verified.

