

# MAGAIN



## 9 Paperbark Way Andrews Farm SA

3 2 1

Please contact Bailey Fielke from Magain Real Estate for all your property advice.

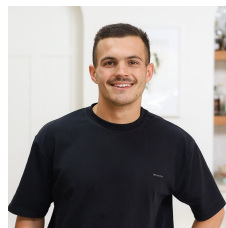
Welcome to 9 Paperbark Way, Andrews Farm. Recently built in 2023 the home has been finalised with all the finishing touches one hopes to have when they think of their next property.

Conveniently located within walking distance to schools, shopping precincts and public transport, you also happen to be stone's throw away from the Northern Expressway, a brisk 35-minute drive in Adelaide's CBD.

The home features:

[For full version visit the website](https://www.magain.com.au/property/9-paperbark-way-andrews-farm-sa/8425390)

**Type** : House  
**Price** : \$ 612,000  
**Land Size** : 300 sqm  
**View** : <https://www.magain.com.au/property/9-paperbark-way-andrews-farm-sa/8425390>



**Bailey Fielke**  
08 8522 2715

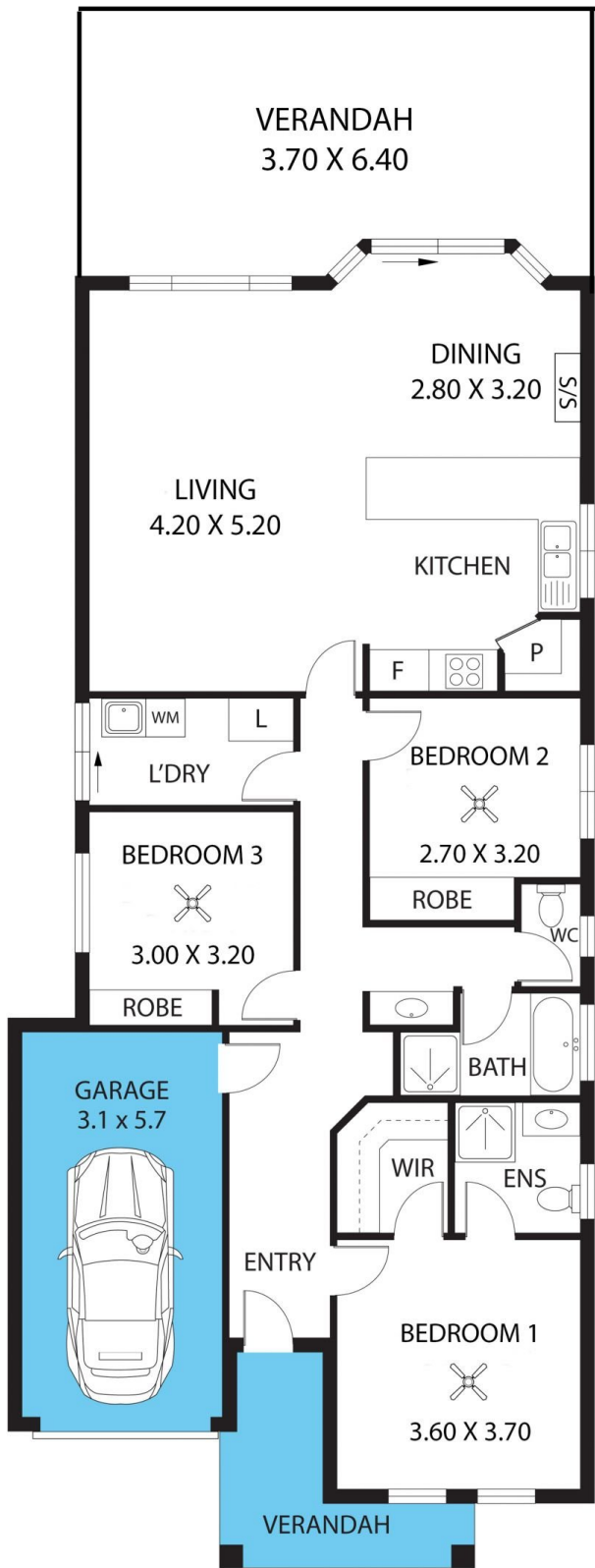


**Grant Fielke**  
08 8522 2715

<https://www.magain.com.au>  
Magain Real Estate

32 Adelaide Road Gawler South SA  
08 8522 2715

9 Paperbark Way,  
**ANDREWS FARM**



Living:	112.39SQ.M
Garage:	17.67SQ.M
Porch:	11.58SQ.M
<b>TOTAL:</b>	<b>141.64SQ.M</b>

This drawing is for illustration purposes only. All measurements are internal and approximate. Details intended to be relied upon should be independently verified.

