

MAGAIN



41 Thiele Crescent Evanston Park SA

5 2 3

Please contact Bailey Fielke or Grant Fielke from Magain Real Estate for all your property advice.

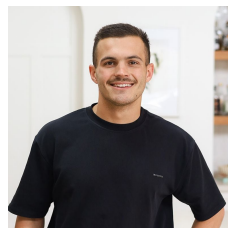
Magain Fielke is privileged to present this completely updated family home. Recently repainted and recarpeted with all new window treatments throughout, it's simply ready to move in.

Situated on almost 700sqm approx. in the Copperfield Estate in Evanston Park this magnificent property is within walking distance to Trinity College, Starplex Gym, Gawler Green Shopping Complex as well as transportation and local parks.

The home features:

[For full version visit the website](https://www.magain.com.au/property/41-thiele-crescent-evanston-park-sa/8425431)

Type : House
Price : \$ 870,000
Land Size : 688 sqm
View : <https://www.magain.com.au/property/41-thiele-crescent-evanston-park-sa/8425431>



Bailey Fielke
08 8522 2715



Grant Fielke
08 8522 2715

<https://www.magain.com.au>
Magain Real Estate

32 Adelaide Road Gawler South SA
08 8522 2715

41 Thiele Crescent,
EVANSTON PARK



Living:	214.57SQ.M
Carport:	50.42SQ.M
Verandah:	43.28SQ.M
Gym:	12.81SQ.M
TOTAL:	321.08SQ.M

This drawing is for illustration purposes only. All measurements are internal and approximate. Details intended to be relied upon should be independently verified.

