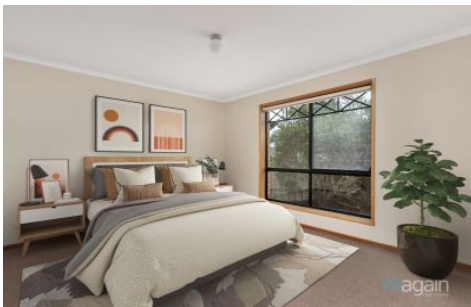


# MAGAIN



## 5 Madeline Court Burton SA

4 2 2

Please contact Bailey Fielke or Grant Fielke from Magain Real Estate for all your property advice.

Magain Fielke is proud to present this well-maintained and presented 2004 family built home situated on approx. 600sqm and located in a quiet cul-de-sac within walking distance to recreational, educational, and shopping facilities other features include:

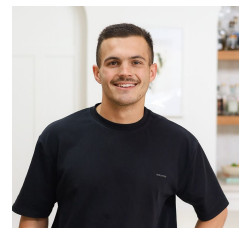
- ? 4 bedrooms, master with ensuites and walk in robe
- ? Bedrooms 2, 3 and 4 are all spacious with built in robes
- ? Kitchen with breakfast bar overlooking the large family area
- ? Second spacious living area
- ? Main bathroom with the convenience of separate toilet

[For full version visit the website](https://www.magain.com.au/property/5-madeline-court-burton-sa/8425433)

**Type** : House  
**Price** : \$ 740,000  
**Land Size** : 590 sqm  
**View** : <https://www.magain.com.au/property/5-madeline-court-burton-sa/8425433>



**Grant Fielke**  
08 8522 2715

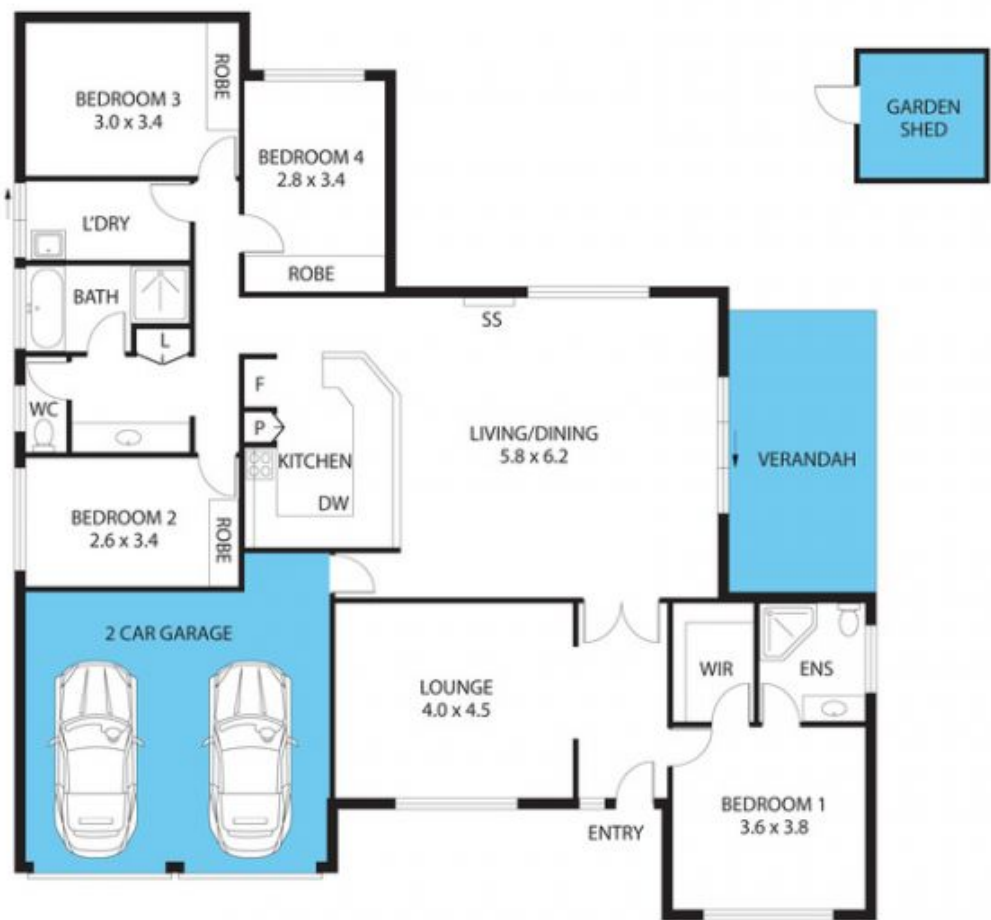


**Bailey Fielke**  
08 8522 2715

<https://www.magain.com.au>  
Magain Real Estate

32 Adelaide Road Gawler South SA  
08 8522 2715

5 Madeline Court,  
**BURTON**



Living:	155.09SQ.M
Garage:	34.80SQ.M
Verandah:	16.20SQ.M
Shed:	5.76SQ.M
<b>TOTAL:</b>	<b>211.85SQ.M</b>

This drawing is for illustration purposes only. All measurements are internal and approximate. Details intended to be relied upon should be independently verified.

