

# MAGAIN



## 5 Augustine Drive Roseworthy SA

4 2 2

Please contact Bailey Fielke or Grant Fielke from Magain Real Estate for all your property advice.

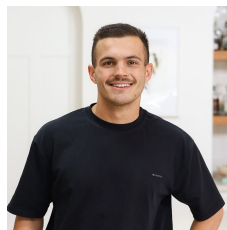
Located within walking distance from the new Trinity College in the prestigious St Yves Estate, this beautifully appointed 2022 Weeks built home offers the perfect blend of luxury, comfort, and functionality - ideal for growing families or those who love to entertain.

Step inside to discover high 2.7m ceilings and a spacious, thoughtfully designed layout featuring a private home theatre room and a kids' retreat with built-in storage - perfect for study, play, or relaxation.

At the heart of the home is a stylish kitchen equipped with

[For full version visit the website](https://www.magain.com.au/property/5-augustine-drive-roseworthy-sa/8425477)

**Type** : House  
**Price** : \$ 750,000  
**Land Size** : 370 sqm  
**View** : <https://www.magain.com.au/property/5-augustine-drive-roseworthy-sa/8425477>



**Bailey Fielke**  
08 8522 2715



**Grant Fielke**  
08 8522 2715

<https://www.magain.com.au>  
Magain Real Estate

32 Adelaide Road Gawler South SA  
08 8522 2715

5 Augustine Drive,  
**ROSEWORTHY**

**GARDEN  
SHED**  
1.8 x 2.4



Living:	137.48SQ.M
Garage:	29.00SQ.M
Alfresco:	16.90SQ.M
Shed:	4.32SQ.M
<b>TOTAL:</b>	<b>187.70SQ.M</b>

This drawing is for illustration purposes only. All measurements are internal and approximate. Details intended to be relied upon should be independently verified.

