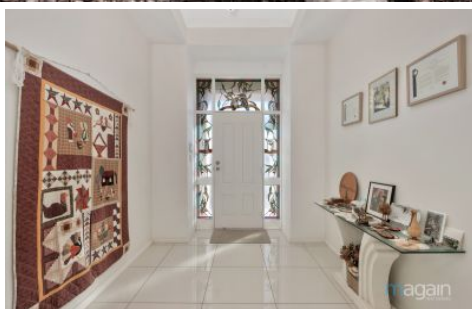


# MAGAIN



## 6 Kingfisher Drive Hewett SA

5 3 2

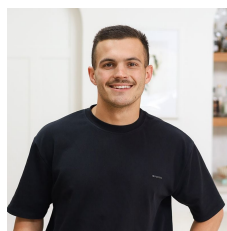
Please contact Bailey Fielke or Grant Fielke from Magain Real Estate for all your property advice.

Set on a generous 980sqm allotment in the highly desirable suburb of Hewett, this spacious family residence offers a perfect blend of comfort, flexibility, and convenience. Built in 1995, this well presented home features up to 5 flexible bedrooms, including a well-appointed main suite with built-in wardrobes, a walk-in robe, and a private ensuite-ideal for parents seeking their own retreat.

Bedrooms two and three also feature built-in robes, providing ample storage for the whole family. Thoughtfully designed for everyday living and entertaining, the home boasts a large verandah and an inviting outdoor

[For full version visit the website](https://www.magain.com.au/property/6-k-ingfisher-drive-hewett-sa/8425484)

**Type** : House  
**Price** : \$ 901,000  
**Building Size** : 231 sqm  
**Land Size** : 980 sqm  
**View** : <https://www.magain.com.au/property/6-k-ingfisher-drive-hewett-sa/8425484>



**Bailey Fielke**  
08 8522 2715



**Grant Fielke**  
08 8522 2715

<https://www.magain.com.au>  
Magain Real Estate

32 Adelaide Road Gawler South SA  
08 8522 2715

6 Kingfisher Drive,  
**HEWETT**



Living: 259.00SQ.M  
Garage: 33.06SQ.M  
Verandah: 86.00SQ.M  
Porch: 4.40SQ.M  
Shed: 9.00SQ.M

**TOTAL: 391.46SQ.M**

This drawing is for illustration purposes only. All measurements are internal and approximate. Details intended to be relied upon should be independently verified.

