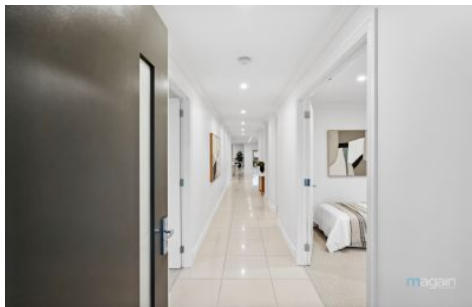


MAGAIN



10 Stuart Road South Plympton SA

4 2 4

Please contact Steve Krause from Magain Real Estate for all your property advice.

Welcome to this exquisite large family home, built in the heart of South Plympton. This prime 808m² allotment is located between Adelaide's vibrant CBD and picturesque Glenelg. Boasting ample space and designed with the modern family in mind, this property will keep you and the kids entertained all year round.

Approaching the home, you'll be greeted by a meticulously maintained front garden, with charm and major curb appeal. Off street parking for four vehicles, two of which are tucked away in the huge double garage.

[For full version visit the website](https://www.magain.com.au/property/10-stuart-road-south-plympton-sa/8425509)

Type : House
Price : \$ 1,612,000
Land Size : 808 sqm
View : <https://www.magain.com.au/property/10-stuart-road-south-plympton-sa/8425509>



Steve Krause
08 8294 4111



Josh Morrison
08 8294 4111

<https://www.magain.com.au>
Magain Real Estate

74 Brighton Road Glenelg East SA
08 8294 4111

