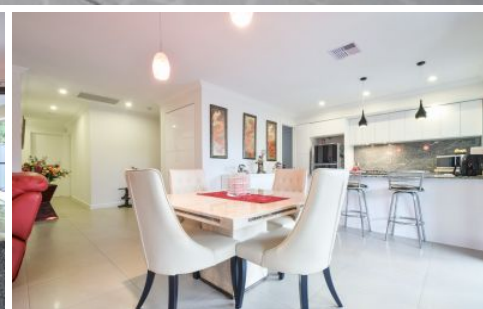


# MAGAIN



## 19A Ophir Crescent SEACLIFF PARK SA

3 2 2

Contact Josh Morrison for viewing times.

This immaculate low maintenance family home is sure to impress with its practical and spacious layout. Built in 2014 the home offers a spacious open plan living and dining area overlooked by the kitchen that is well equipped with everything you would expect in a quality build like this, including quality appliances, marble bench tops and a dishwasher. Boasting three generously sized bedrooms all with robes, the master suite with walk through robe, ensuite and private courtyard for escaping the hustle and bustle of modern day life. Other features include high ceilings, ample storage space and solar panels. For year round comfort the home is equipped with zoned, ducted reverse cycled heating and cooling.

Outside there is plenty of room to entertain your family and

[For full version visit the website](https://www.magain.com.au)

**Type** : House  
**Building Size** : 17 sqm  
**Land Size** : 373 sqm  
**View** : <https://www.magain.com.au/property/19a-ophir-crescent-seacliff-park-sa/8425515>



**Josh Morrison**  
08 8294 4111

19a Ophir Crescent Seacliff Park, South Australia.



**Picture intended as a reference only.** Any specific measurements required should be obtained by an independent surveyor.