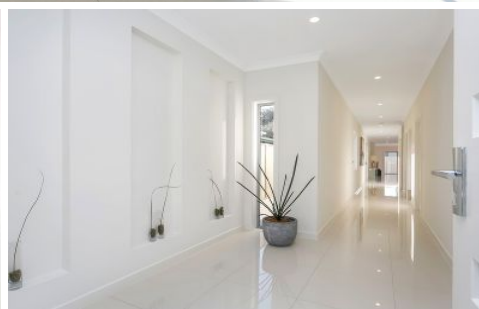





MAGAIN



6 Byard Terrace MITCHELL PARK SA

3  2  2 

Please contact Josh Morrison for viewing times.

Completely detached just completed and brand new Torrens Titled home with a building size of approximately 270sqm, this classy family home is everything you have been looking for.

An emphasis on spacious rooms and ample storage has been incorporated into the floor plan which includes two separate living areas, 3 bedrooms all with robes, master with walk through robe, en suite and private balcony, upstairs family bathroom with separate toilet and powder room, downstairs toilet and powder room.

Conveniently located close quality shops including Westfield Marion, public transport, quality local schools, SA Aquatic Centre, Flinders University and Hospital and Tonsley all with the convenience of being 15 minutes to the

Type : House
Building Size : 29 sqm
View : <https://www.magain.com.au/property/6-byard-terrace-mitchell-park-sa/8425541>

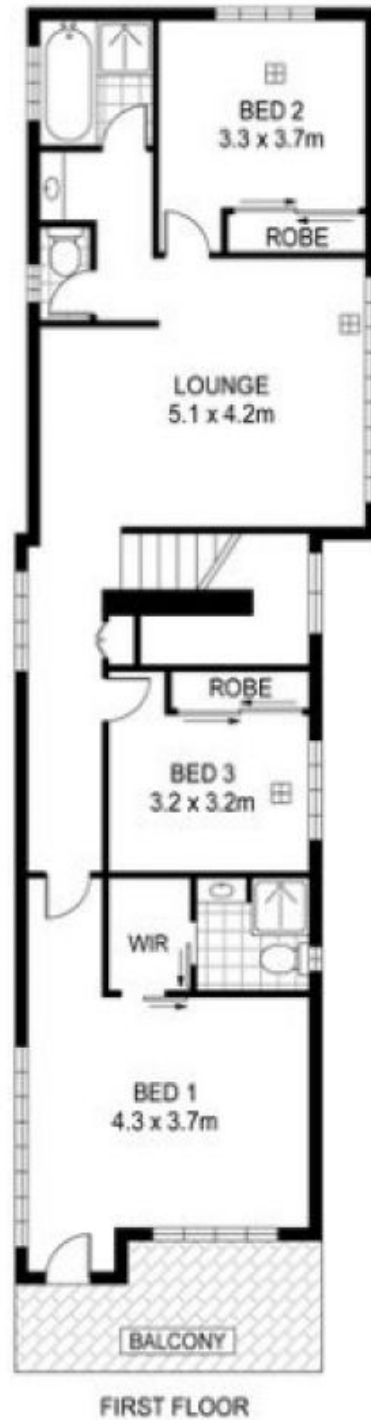


Josh Morrison
08 8294 4111

[For full version visit the website](https://www.magain.com.au)

<https://www.magain.com.au>
Magain Real Estate

74 Brighton Road Glenelg East SA
08 8294 4111



AREAS (DWELLING 1 and 2)

L. LIVING	105.60
U. LIVING	99.86
GARAGE	35.43
BALCONY	14.94
PORCH	2.55
VERANDAH	12.39
TOTAL	270.77 m²



Scale in metres. Indicative only. Dimensions are approximate. All information contained herein is gathered from sources we believe to be reliable. However we cannot guarantee its accuracy and interested persons should rely on their own enquiries.

INT : 187m²

6 Byard Terrace, Mitchell Park