

# MAGAIN



## 5A Toms Court ADELAIDE SA

2 1 2

Please phone Josh Morrison for viewing times.

This trendy three level townhouse located in a tightly held group just a stone's throw from the ever popular Halifax Street is ready to move in and enjoy. Located at the southern end of the city you will love the lifestyle that city living offers with cafes and restaurants at your doorstep.

On the second level you will find the spacious open plan dining, living area and kitchen. The kitchen is well equipped and offers great storage space, stone bench tops and a dishwasher. Every position in this room captures the views out over the city, the space is light filled and the Tasmanian Oak floors add warmth and character. Through the large sliding doors you also have access to the generous private

[For full version visit the website](https://www.magain.com.au/property/5a-toms-court-adelaide-sa/8425551)

**Type** : Townhouse  
**Building Size** : 11 sqm  
**Land Size** : 45 sqm  
**View** : <https://www.magain.com.au/property/5a-toms-court-adelaide-sa/8425551>

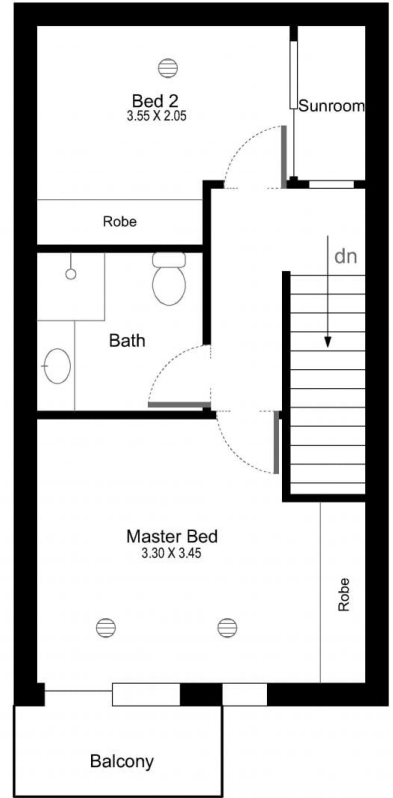
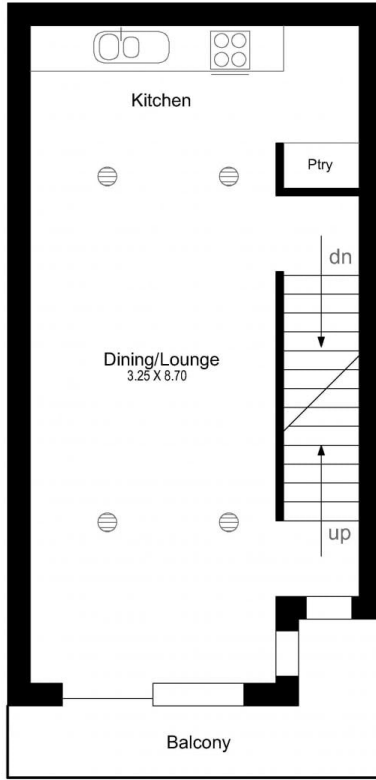
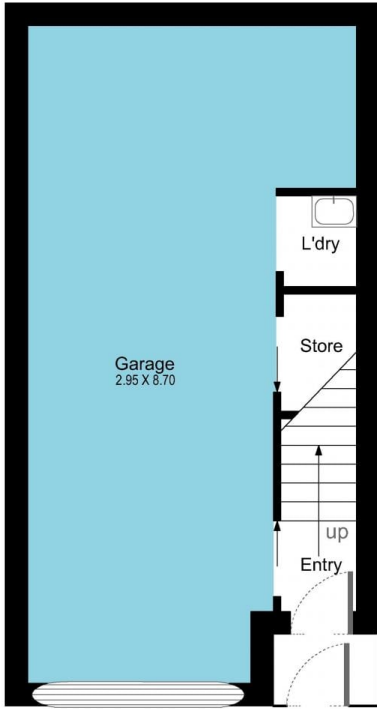


**Josh Morrison**  
08 8294 4111

<https://www.magain.com.au>  
Magain Real Estate

74 Brighton Road Glenelg East SA  
08 8294 4111

5A Toms Court Adelaide, South Australia



Picture intended as a reference only. Any specific measurements required should be obtained by an independent surveyor.