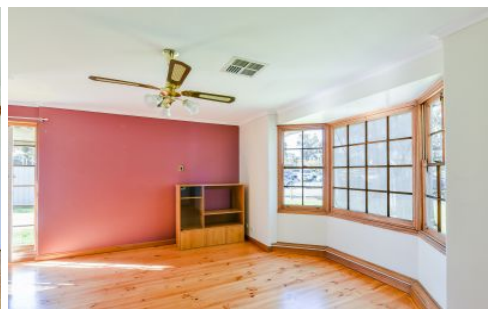


# MAGAIN



1/18 Murray Terrace OAKLANDS PARK SA

2 1 1

Please contact Josh Morrison or Brooke Paech for viewing times.

This solid brick unit nestled off the main road, in a very convenient location is sure to impress even the most fastidious of buyers.

At the front of the home is a generous lounge room with beautiful floating floor boards and large timber bay windows creating plenty of light to seep through the home. This leads seamlessly through to the open plan dining and kitchen area, which offers plenty of cupboard / bench-top space and a gas cook top. There is a separate linen cupboard, two good size carpeted bedrooms with built in robes and a bathroom with new vanity, toilet and mirror.

**Type** : Unit

**View** : <https://www.magain.com.au/property/118-murray-terrace-oaklands-park-sa/8425559>



**Josh Morrison**  
08 8294 4111

[For full version visit the website](https://www.magain.com.au)

<https://www.magain.com.au>  
Magain Real Estate

74 Brighton Road Glenelg East SA  
08 8294 4111

1/18 Murray Terrace Oaklands Park, South Australia



Picture intended as a reference only. Any specific measurements required should be obtained by an independent surveyor.