

MAGAIN



22 Philipson Crescent SHEIDOW PARK SA

3 2 2

Contact Craig Thomson or Sheridan Anthony for viewing times.

This fantastic home is ideally situated on a quiet street, conveniently set close to local amenities including shops, quality schools, public transport, parks and more. It is an absolute must see for first home buyers, growing families or those seeking a superb investment opportunity.

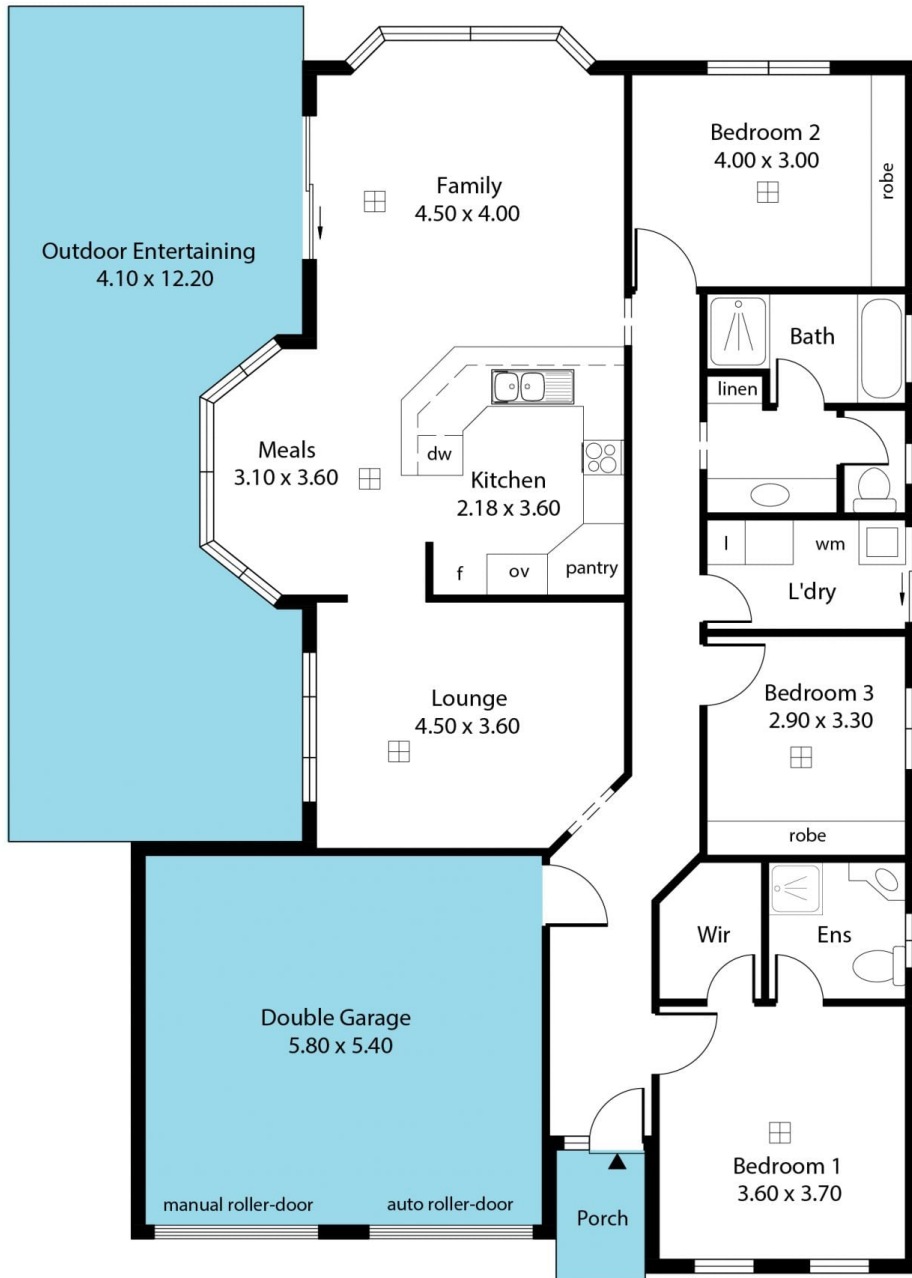
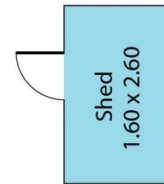
The kitchen features quality stainless steel appliances including electric cook-top and wall oven. Equipped with ample cupboard storage, built in pantry, microwave nook and breakfast bar overlooking the meals and family areas. The functional floor-plan provides a formal living area at the front of the home, ideal for year round occasions.

[For full version visit the website](https://www.magain.com.au/property/22-philipson-crescent-sheidow-park-sa/8425613)

Type : House
Building Size : 17 sqm
Land Size : 450 sqm
View : <https://www.magain.com.au/property/22-philipson-crescent-sheidow-park-sa/8425613>



Craig Thomson
08 8366 2292



Area	m ²
Living	141
Outdoor Ent.	47
Garage	34
Shed	4
Porch	2
Total	228