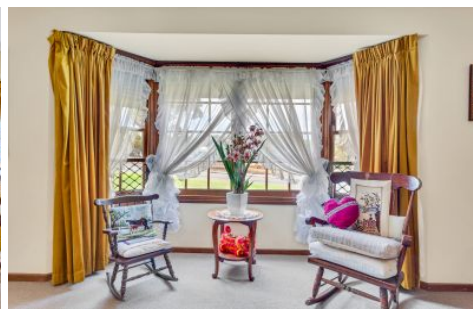


MAGAIN



19 Suzanne Avenue MORPHETT VALE SA

4 2 1

Contact Craig Thomson or Sheridan Anthony for viewing times.

This fantastic family home is situated on a generous allotment of approximately 760sqm, ideally set on a quiet street and conveniently located close to amenities including local shops, quality schools, public transport, parks, access to the southern expressway and much more. It is an absolute must see for first home buyers, growing families or those seeking a superb investment opportunity.

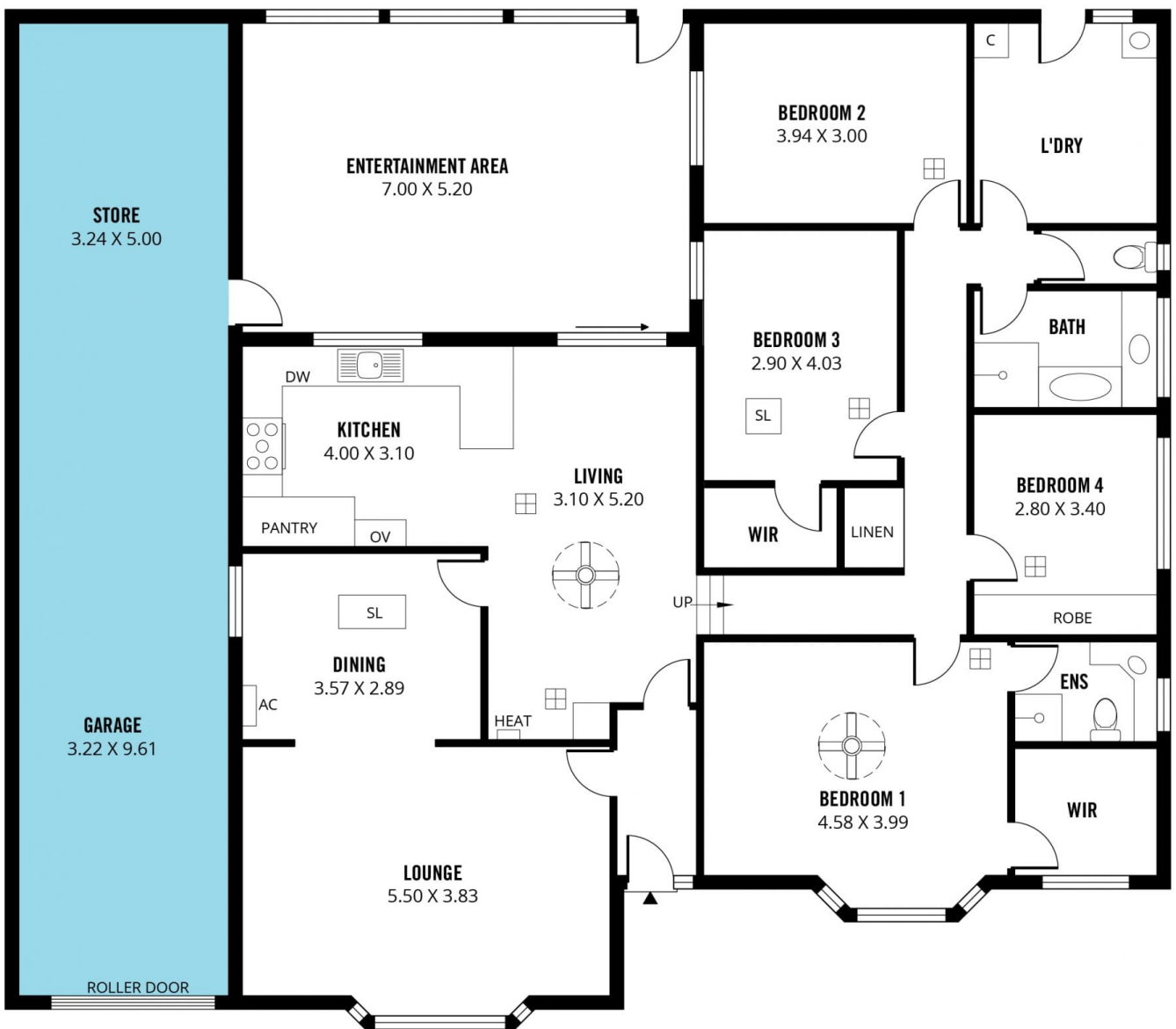
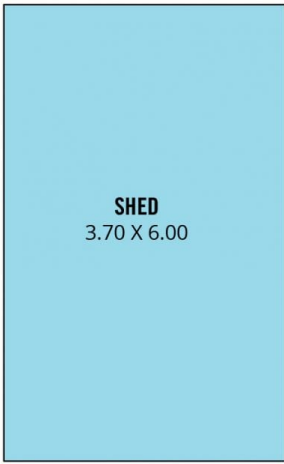
The kitchen features gas cook-top, electric oven and dishwasher. Equipped with ample cupboard storage, built in pantry and breakfast bar overlooking the meals area. The spacious floor-plan ideally offers a formal living and

[For full version visit the website](https://www.magain.com.au/property/19-suzanne-avenue-morphett-vale-sa/8425623)

Type : House
Building Size : 19 sqm
Land Size : 760 sqm
View : <https://www.magain.com.au/property/19-suzanne-avenue-morphett-vale-sa/8425623>



Craig Thomson
08 8366 2292



Scale in metres. This drawing is for illustration purposes only. All measurements are approximate and details intended to be relied upon should be independently verified.

Produced by **The Fotobase Group**