

# MAGAIN



## 21 Sandy Lane HACKHAM SA

3  2  1 

Contact Craig Thomson or Sheridan Anthony for viewing times.

This beautiful Fairmont home is situated on a generous allotment of approximately 496sqm, ideally set on a quiet street close to local amenities including shops, quality schools, public transport, parks and much more. It is an absolute must see for first home buyers, growing families, downsizers or those seeking a superb investment opportunity.

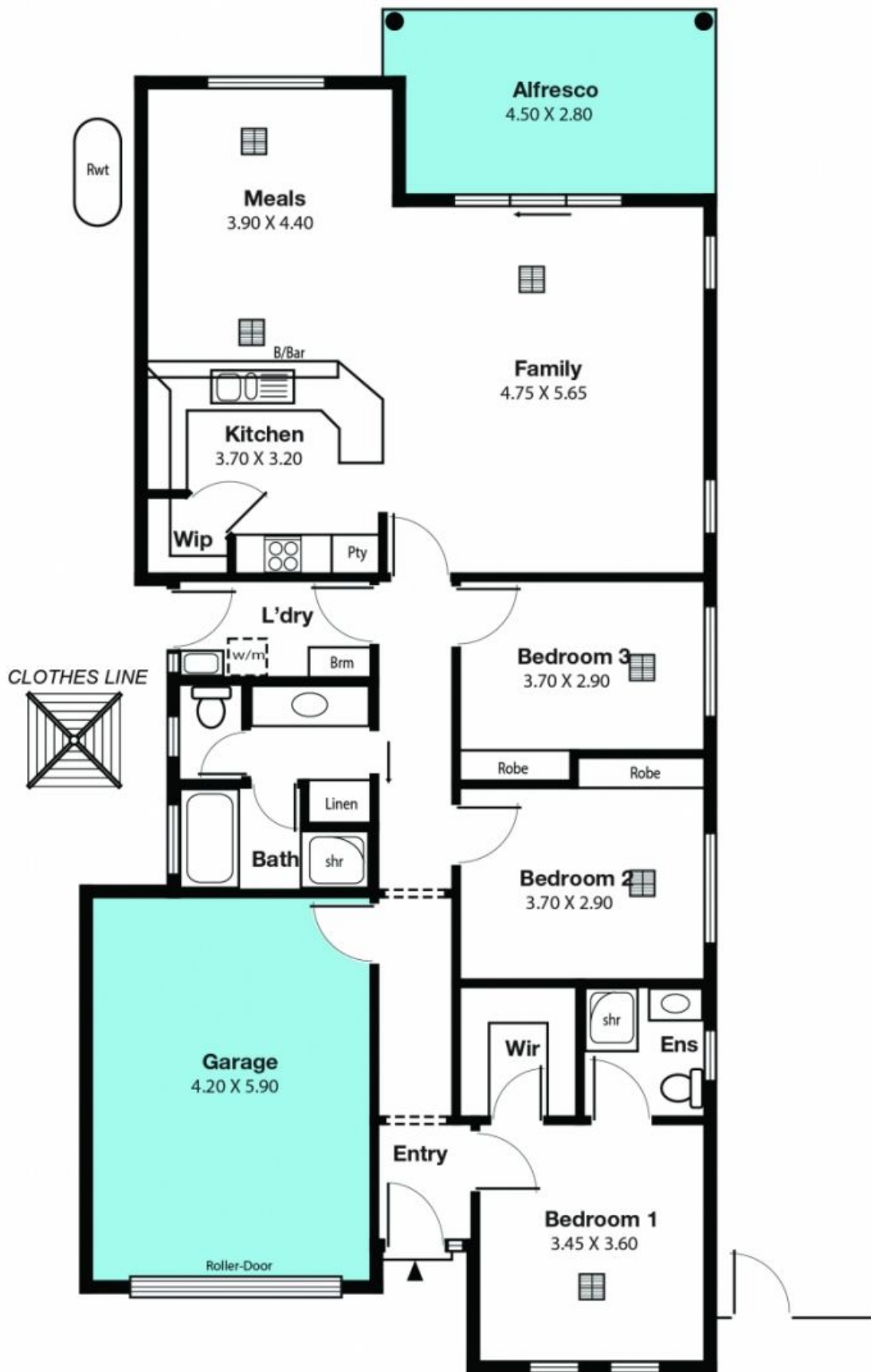
The open plan kitchen features quality stainless steel appliances including gas cook-top and electric oven. Equipped with ample cupboard storage, built in pantry and breakfast bar overlooking the spacious open plan living and

[For full version visit the website](https://www.magain.com.au/property/21-sandy-lane-hackham-sa/8425634)

**Type** : House  
**Building Size** : 15 sqm  
**Land Size** : 496 sqm  
**View** : <https://www.magain.com.au/property/21-sandy-lane-hackham-sa/8425634>



**Craig Thomson**  
08 8366 2292



Area	m <sup>2</sup>
Living:	142.73
Verandah/Porch:	.85
Garage:	28.46
Alfresco:	14.18
<b>Total:</b>	<b>186.22</b>