

# MAGAIN



2/5 Seawynd Court SEACLIFF PARK SA

1 1 1

Please contact Melissa Brennan for viewing times.

Located in the prime position of Seacliff Park, this highly sought after location is in close proximity to Seacliff Beach, Seacliff Primary Elementary school, Marion Shopping Centre and numerous transportation options to get you to the city and beach with all the cafes, restaurants and of course shopping that this great precinct has to offer. This spacious one bedroom unit is sure to appeal to singles, busy couples or investors.

Unit number on door is number five of the group.

As you step into this retro light filled, well presented unit you are greeted with a generous sized living area with a partition wall leading you to the large dining and kitchen

[For full version visit the website](https://www.magain.com.au/property/25-seawynd-court-seacliff-park-sa/8425638)

**Type** : Unit  
**Building Size** : 6 sqm  
**Land Size** : 192 sqm  
**View** : <https://www.magain.com.au/property/25-seawynd-court-seacliff-park-sa/8425638>

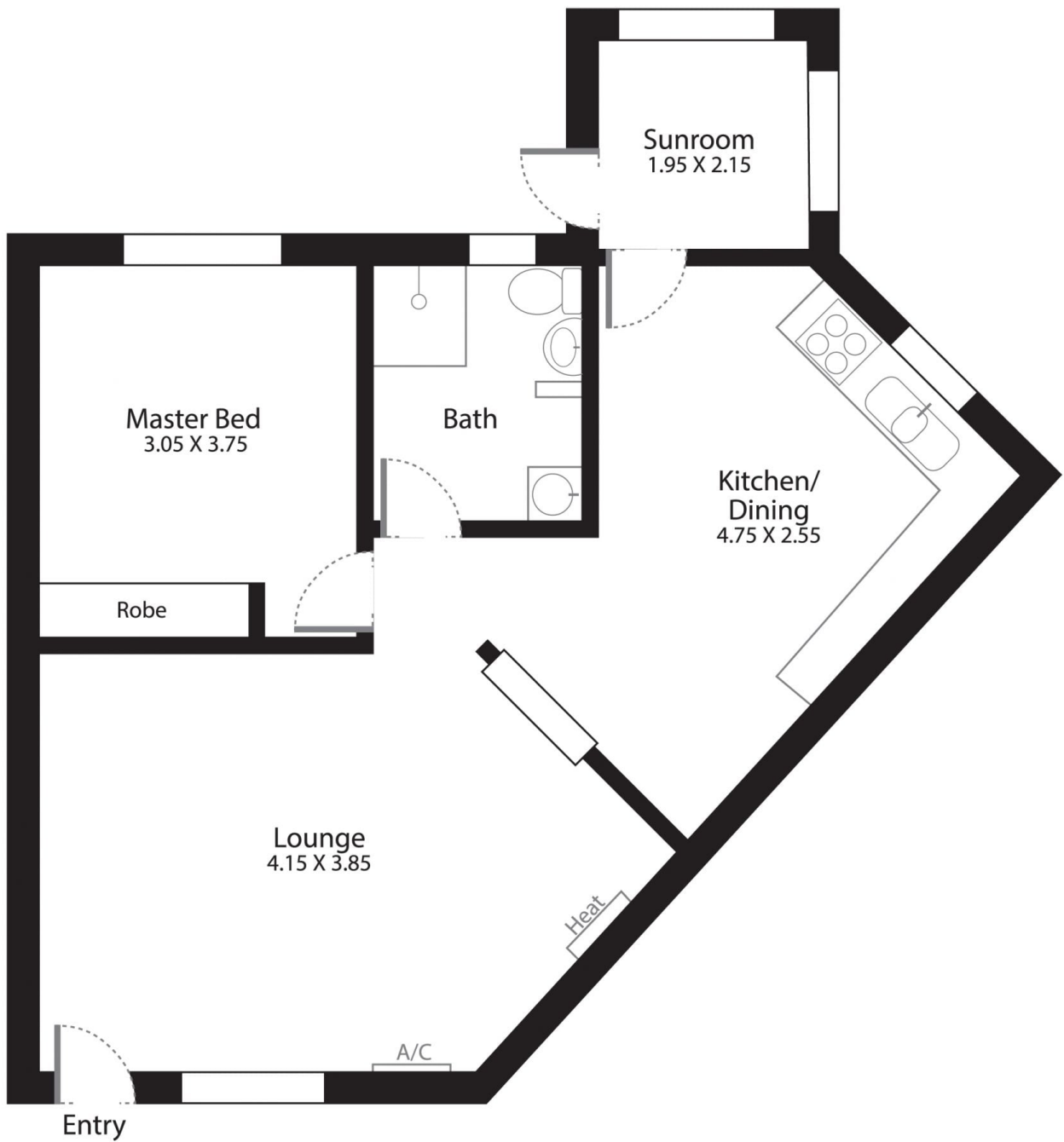


**Josh Morrison**  
08 8294 4111

<https://www.magain.com.au>  
Magain Real Estate

74 Brighton Road Glenelg East SA  
08 8294 4111

2/5 Seawynd Court, Seacliff Park, South Australia



**Picture intended as a reference only.** Any specific measurements required should be obtained by an independent surveyor.