

MAGAIN



40 Edith Street MORPHETT VALE SA

3  1  1 

Contact Craig Thomson or Sheridan Anthony for viewing times.

This fantastic home is situated on a generous allotment of approximately 652sqm, ideally set on a quiet street close to local amenities including shops, quality schools, parks, public transport, access to the southern expressway and much more. It is an absolute must see for first home buyers, downsizers or those seeking a superb investment opportunity.

The kitchen features quality stainless steel appliances including gas cook-top, electric oven and pura tap. Equipped with ample cupboard storage and breakfast bar overlooking the dining, leading through to the spectacular

[For full version visit the website](https://www.magain.com.au/property/40-edith-street-morphett-vale-sa/8425657)

Type : House
Building Size : 11 sqm
Land Size : 652 sqm
View : <https://www.magain.com.au/property/40-edith-street-morphett-vale-sa/8425657>

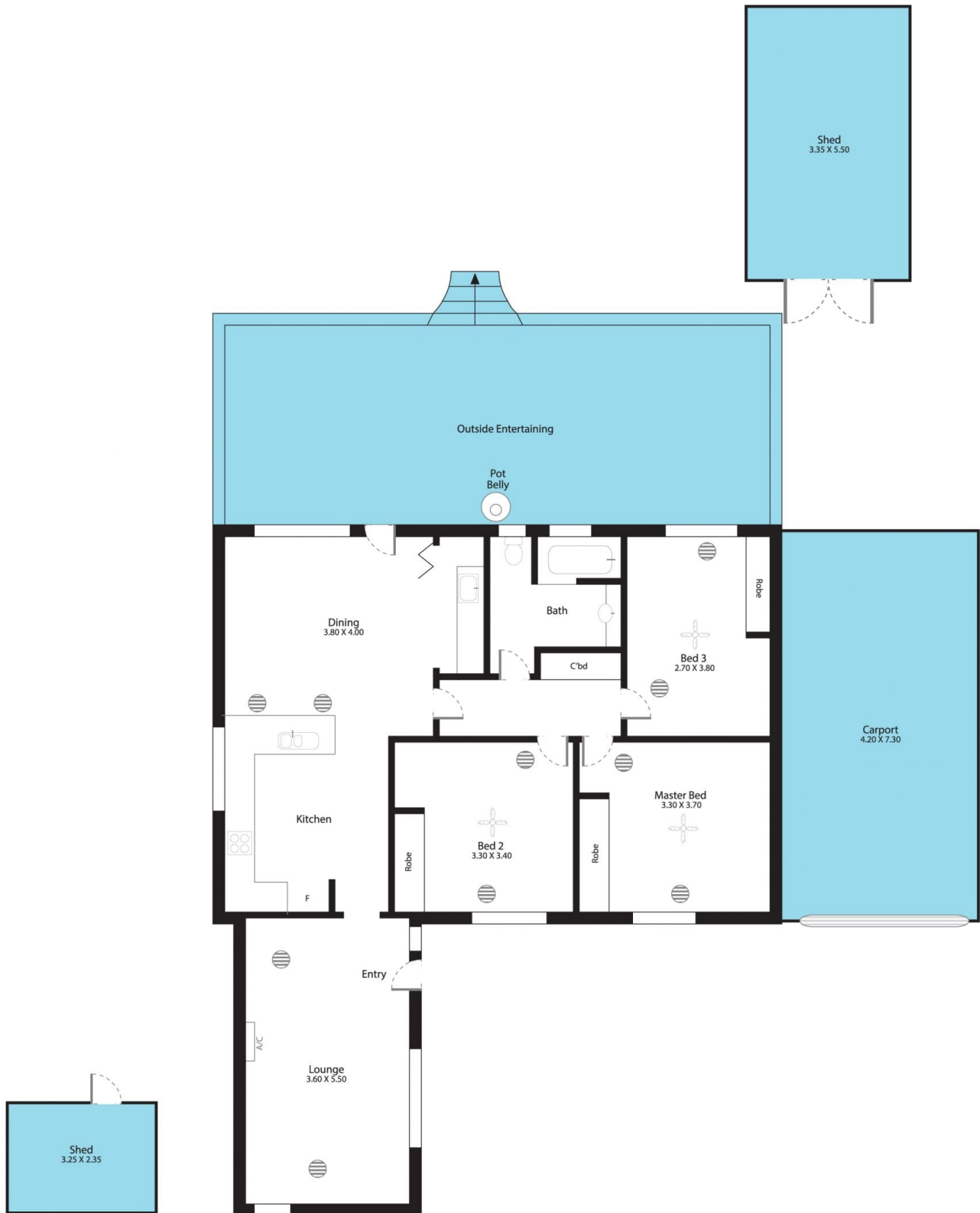


Craig Thomson
08 8366 2292

<https://www.magain.com.au>
Magain Real Estate

74 Brighton Road Glenelg East SA
08 8294 4111

40 Edith Street Morphett Vale, South Australia



Picture intended as a reference only. Any specific measurements required should be obtained by an independent surveyor.