

MAGAIN



19 Wangara Avenue MORPHETT VALE SA

3  1  1 

Contact Craig Thomson or Sheridan Anthony for viewing times.

This fantastic home is situated on a generous allotment of approximately 826sqm, ideally set on a quiet street close to local amenities including shops, quality schools, parks, public transport, access to the southern expressway and more. It is an absolute must see for first home buyers, investors and developers alike.

The kitchen features gas cook-top, gas oven and pura tap. Equipped with ample cupboard storage and overlooks the meals area. The living area at the front of the home is complete with carpet flooring, air conditioner and quality blinds.

[For full version visit the website](https://www.magain.com.au/property/19-wangara-avenue-morphett-vale-sa/8425659)

Type : House
Building Size : 12 sqm
Land Size : 826 sqm
View : <https://www.magain.com.au/property/19-wangara-avenue-morphett-vale-sa/8425659>

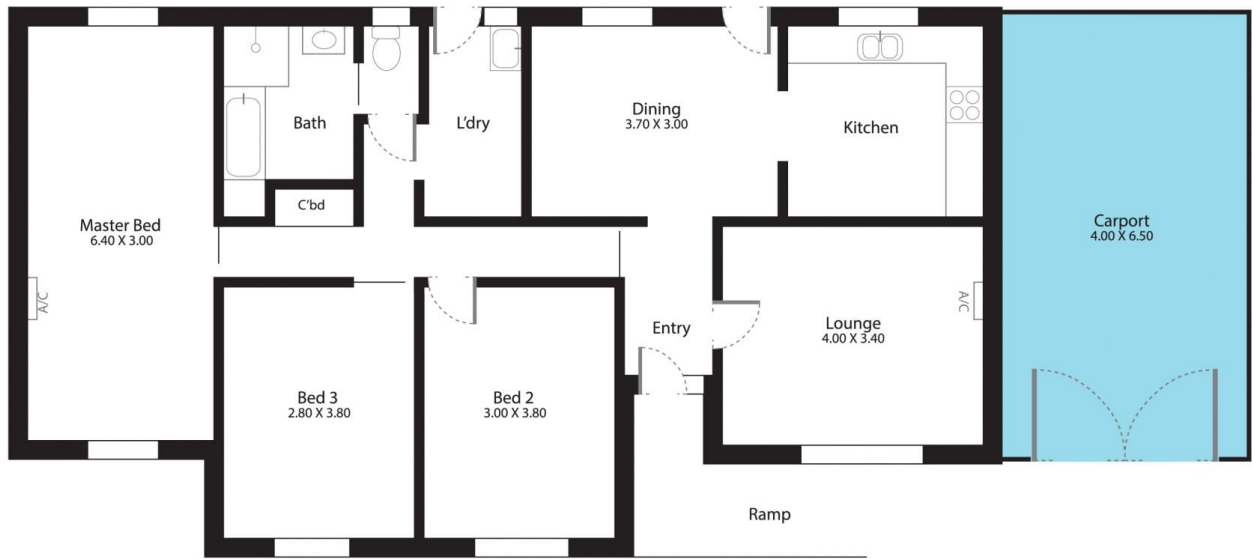


Craig Thomson
08 8366 2292

<https://www.magain.com.au>
Magain Real Estate

74 Brighton Road Glenelg East SA
08 8294 4111

19 Wangara Avenue Morphett Vale, South Australia



Picture intended as a reference only. Any specific measurements required should be obtained by an independent surveyor.