

MAGAIN



18 Kuranya Way MORPHETT VALE SA

4  1  1 

Contact Craig Thomson or Sheridan Anthony for viewing times.

This fantastic home is situated on a generous allotment of approximately 670sqm, ideally set on a quiet street close to local amenities including shops, quality schools, parks, public transport, access to the southern expressway and much more. It is an absolute must see for first home buyers, growing families or those seeking a superb investment opportunity.

The kitchen features quality appliances including oven, gas cook-top and dishwasher. Equipped with ample cupboard storage, built in pantry and leads through to the spacious meals/family area.

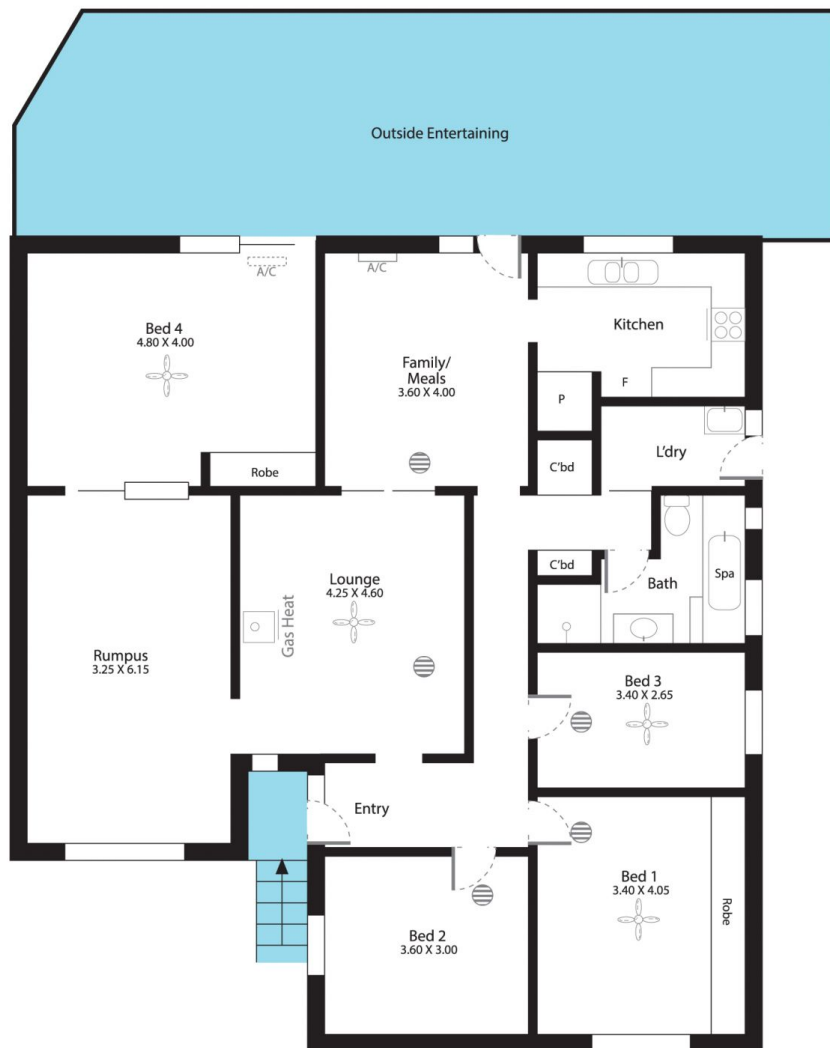
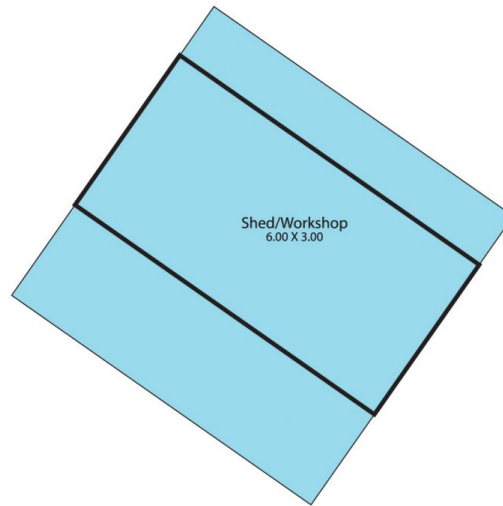
[For full version visit the website](https://www.magain.com.au/property/18-kuranya-way-morphett-vale-sa/8425663)

Type : House
Building Size : 14 sqm
Land Size : 670 sqm
View : <https://www.magain.com.au/property/18-kuranya-way-morphett-vale-sa/8425663>



Craig Thomson
08 8366 2292

18 Kuranya Way Morphett Vale, South Australia



Picture intended as a reference only. Any specific measurements required should be obtained by an independent surveyor.