

MAGAIN



12 Kantalpa Grove MORPHETT VALE SA

3 2 6

Contact Craig Thomson or Sheridan Anthony for viewing times.

This fantastic home is situated on a generous allotment of approximately 734sqm, ideally set on a quiet street overlooking a large picturesque reserve. Conveniently positioned close to local amenities including shops, quality schools, public transport, access to the southern expressway and more. It is an absolute must see for first home buyers, growing families or those seeking a superb investment opportunity.

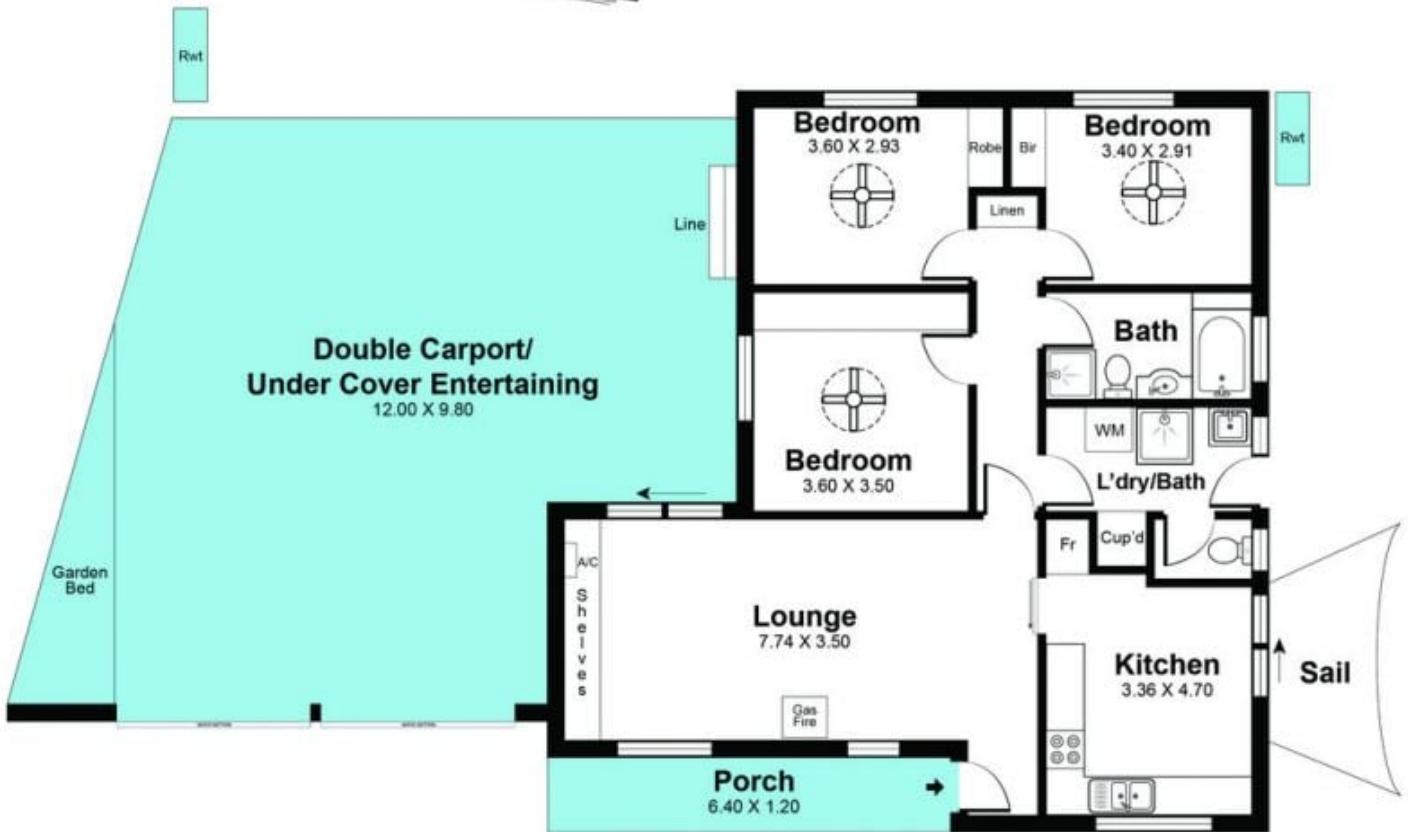
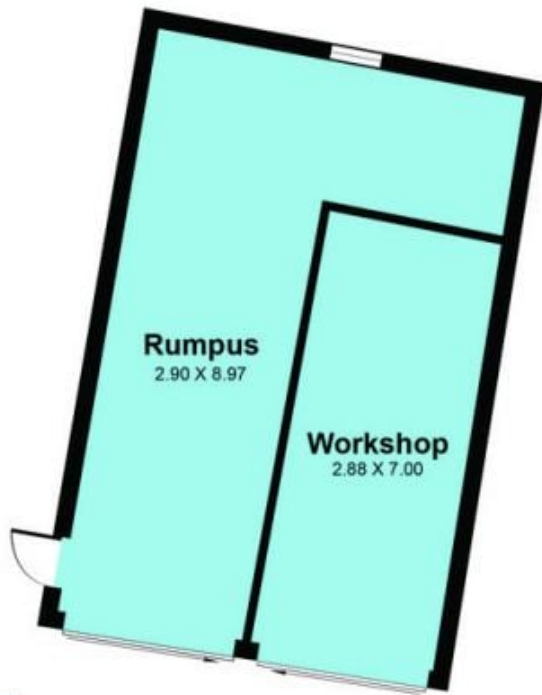
The kitchen features gas cook-top, ample cupboard storage, dining area and leads through to the spacious lounge at the front of the home.

[For full version visit the website](https://www.magain.com.au/property/12-kantalpa-grove-morphett-vale-sa/8425666)

Type : House
Building Size : 12 sqm
Land Size : 734 sqm
View : <https://www.magain.com.au/property/12-kantalpa-grove-morphett-vale-sa/8425666>



Craig Thomson
08 8366 2292



*This drawing is for illustration purposes only.
All measurements are approximate and details intended
to be relied upon should be independently verified.*