

# MAGAIN



## 4 Panorama Avenue HACKHAM SA

3  1 

Contact Craig Thomson or Sheridan Anthony for viewing times.

This fantastic home is ideally situated on a quiet street close to local amenities including shops, quality schools, parks, public transport and more. An absolute must see for first home buyers, downsizers or those seeking a superb investment opportunity.

The updated kitchen features quality stainless steel appliances including gas cook-top and electric oven. Equipped with ample cupboard storage, microwave nook and overlooks the dining area. Leading through to the living area at the front of the home, complete with carpet flooring, ceiling fan and ideally fitted with a split system reverse

**Type** : House  
**Building Size** : 12 sqm  
**Land Size** : 392 sqm  
**View** : <https://www.magain.com.au/property/4-panorama-avenue-hackham-sa/8425681>



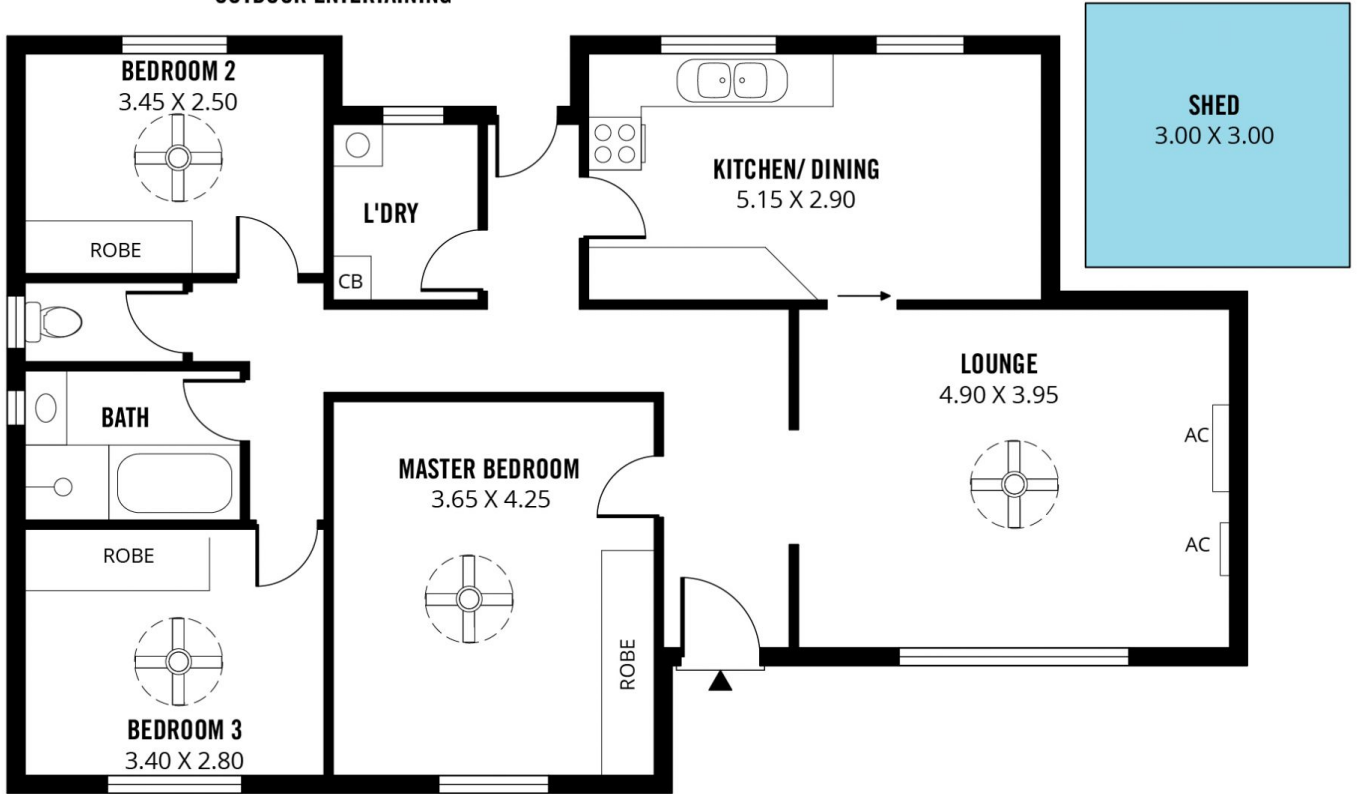
**Craig Thomson**  
08 8366 2292

[For full version visit the website](https://www.magain.com.au)

<https://www.magain.com.au>  
Magain Real Estate

74 Brighton Road Glenelg East SA  
08 8294 4111

**OUTDOOR ENTERTAINING**



Scale in metres. This drawing is for illustration purposes only. All measurements are approximate and details intended to be relied upon should be independently verified. Produced by **The Fotobase Group**