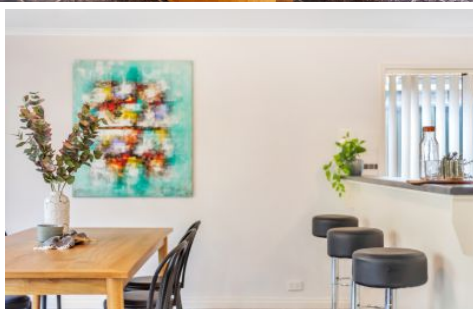


# MAGAIN



## 63A Erebus Circuit MORPHETT VALE SA

3 2 2

Contact Craig Thomson or Sheridan Anthony for viewing times.

This fantastic family home is ideally situated on a quiet no through road, conveniently set within close proximity to amenities including local shops, quality schools, parks, public transport, access to the southern expressway and much more. It is an absolute must see for first home buyers, growing families, savvy investors or those seeking to downsize - without the compromise.

The open plan kitchen features quality stainless steel appliances including gas cook-top and Blanco electric oven. Equipped with ample cupboard storage, built in pantry, dishwasher provision, pura tap and a breakfast bar overlooking the open dining and living areas.

Offering 3 spacious bedrooms throughout, each with carpet

**Type** : House  
**Building Size** : 18 sqm  
**Land Size** : 350 sqm  
**View** : <https://www.magain.com.au/property/63-a-erebus-circuit-morphett-vale-sa/8425685>



**Craig Thomson**  
08 8366 2292

[For full version visit the website](https://www.magain.com.au)

<https://www.magain.com.au>  
Magain Real Estate

74 Brighton Road Glenelg East SA  
08 8294 4111

**WORKSHOP/ SHED**  
4.45 X 2.20

**SHED**  
0.75 X 1.50



Scale in metres. This drawing is for illustration purposes only. All measurements are approximate and details intended to be relied upon should be independently verified.

Produced by **The Fotobase Group**