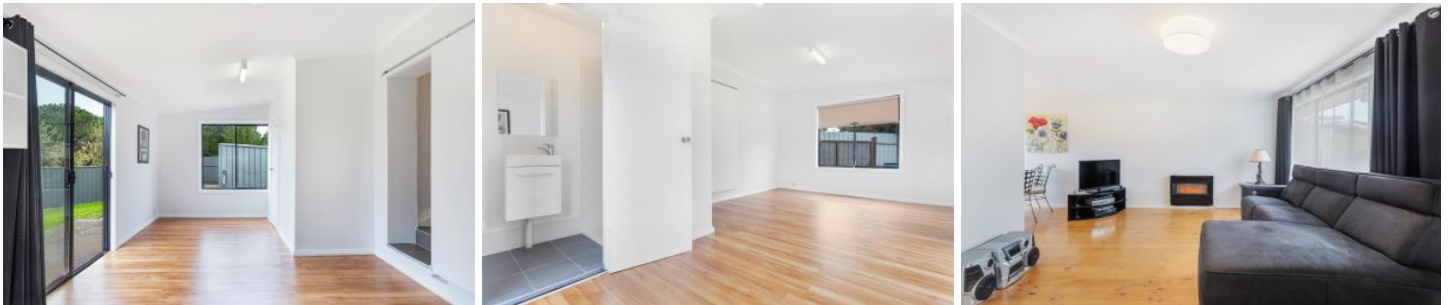




# MAGAIN



## 4 Sergej Court REYNELLA SA

4  2  2 

Please contact Melissa Brennan or Josh Morrison for more information.

Located in a quiet court and close to local shops, the Southern Expressway and public transport - this affordable entry level property is a must see. Situated on a generous allotment of approximately 630sqm there's room for the whole family!

With a flexible floorplan consisting of 4 bedrooms, open plan living, updated kitchen and fresh new bathrooms, there are plenty of options for every family or investor alike. With a light and bright formal lounge offering gas heating, timber floors and an abundance of light it's an ideal place to relax on a winters night.

**Type** : House  
**Land Size** : 630 sqm  
**View** : <https://www.magain.com.au/property/4-sergej-court-reynella-sa/8425726>

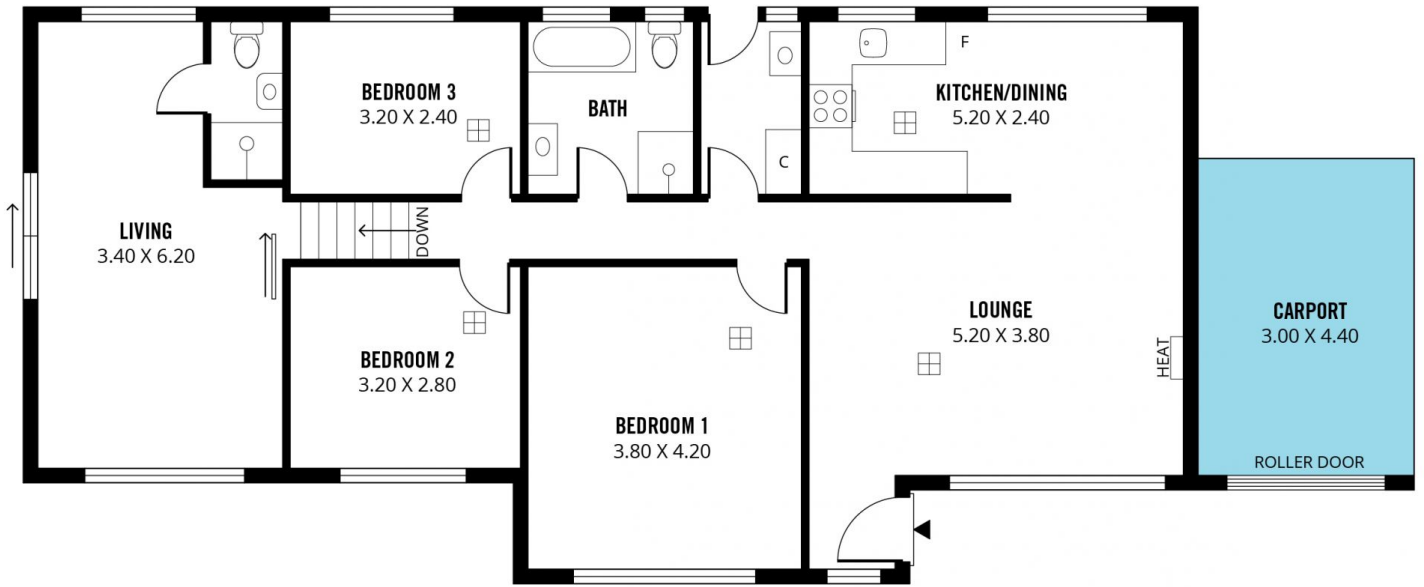
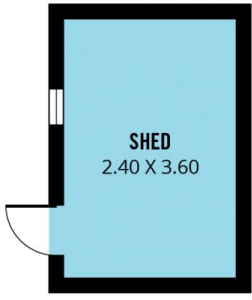


**Josh Morrison**  
08 8294 4111

[For full version visit the website](https://www.magain.com.au)

<https://www.magain.com.au>  
Magain Real Estate

74 Brighton Road Glenelg East SA  
08 8294 4111



Scale in metres. This drawing is for illustration purposes only. All measurements are approximate and details intended to be relied upon should be independently verified.

Produced by **The Fotobase Group**