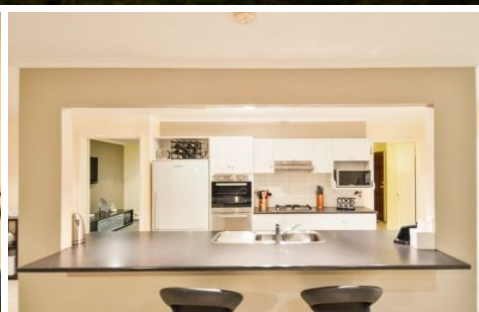


MAGAIN



12 Gateacre Brow ONKAPARINGA HILLS SA

3 1 5

Contact Josh Morrison for viewing details.

This delightful family home is sure to impress even the most discerning of buyers, beautifully presented throughout, and in an extremely sought after location.

Inside the home boasts plenty of room for the kids and the parents with two huge living areas, three large bedrooms, two with built in robes and the master with walk in robe and access to the spacious family bathroom. The kitchen is the true hub of the home, it has a modern yet distinguished styling topped off with a practical layout, and has just been upgraded with all new stainless steel appliances including the dishwasher. For year round comfort the home has ducted cooling, and gas heating, this one has it all.

[For full version visit the website](https://www.magain.com.au/property/12-gateacre-brow-onkaparinga-hills-sa/8425809)

Type : House
Building Size : 18 sqm
Land Size : 905 sqm
View : <https://www.magain.com.au/property/12-gateacre-brow-onkaparinga-hills-sa/8425809>



Josh Morrison
08 8294 4111

<https://www.magain.com.au>
Magain Real Estate

74 Brighton Road Glenelg East SA
08 8294 4111

12 Gateachre Brow Onkaparinga Hills, South Australia.



Picture intended as a reference only. Any specific measurements required should be obtained by an independent surveyor.